



Hillsdale County Great Start Collaborative

Document edited 10/17/20

Hillsdale County The **Resource / Referral Guide** is intended to provide information on health and human services available through non-profits and governmental bodies in Hillsdale County. Each page has a separate subject and is broken down into categories of need.

Information and Referral Trees to access the following services in Hillsdale County:

- [Adult Literacy pg. 3](#)
- [Children's Literacy pg. 4](#)
- [Dentists pg. 5](#)
- [Disability Resources pg. 6](#)
- [Domestic Violence & Sexual Assault pg.7](#)
- [Early Childhood pg. 8](#)
- [Emergency Assistance pg. 9](#)
- [Financial Services pg. 10](#)
- [Food Pantries & Meals pg. 11](#)
- [Foster Care Resources pg. 12](#)
- [Health Resources pg. 13](#)
- [Healthcare & Dental for the Uninsured pg. 14](#)
- [Housing \(*Apartment Listing*\) pg. 15](#)
- [Housing Assistance pg. 16](#)
- [Mental Health pg. 17](#)
- [Mental Health –*Psychiatric & Counseling Providers* pg.18](#)
- [Mental Health—*Counseling Providers* pg. 19](#)
- [Mental Health—*Counseling Supports* pg. 20](#)
- [National/Community Events pg. 21](#)
- [Ophthalmologists pg. 22](#)
- [Parent Resources pg.23](#)
(Playgroups, Parent Groups, Car Seat Inspections, etc.)
- [Physicians pg. 24—25](#)
- [Police/Fire/Ambulance pg. 26](#)
- [Prenatal/Obstetrics pg. 27](#)
- [Public Benefits pg. 28](#)
- [Senior Housing pg. 29](#)
- [Senior Resources pg. 30](#)
- [Social/Recreational/Educational Opportunities pg. 31](#)
- [Special Populations pg. 32](#)
- [Substance Use Disorder Services pg. 33-34](#)
- [Support Groups pg. 35-36](#)
- [Thrift Stores pg. 37](#)
- [Transportation & Gas Vouchers pg. 38](#)
- [Veterans Benefits pg. 39](#)
- [Volunteerism pg. 40](#)
- [Women's Health pg. 41](#)
- [Workforce Development pg.42](#)
- [Youth Services– *School Districts* pg. 43](#)
- [Pandemic Pages, pg. 44](#)

Hillsdale County Great Start Collaborative
Community Resources Subcommittee
www.greatstarhillsdale.com
517-689-1815
Stefanie.rathburn@hillsdale-isd.org

For more information and resources:



Are you on the front lines serving people within Hillsdale County? YOU are invited to join an online community....



The **Hillsdale County Resources** Google email group is a **FREE group** made up of knowledgeable and dedicated human services professionals and caring individuals serving Hillsdale County from all areas of human service - non-profits, children's services, hospitals, substance abuse, the homeless, seniors, the disabled, schools, public service, faith based groups, and more. This group will be utilized to send requests for help, information sharing, and occasional news.

Many of the agencies located in this guide are members of the Hillsdale County Resources Google group! Please join us!

NAME: Hillsdale County Resources Google email group

DESCRIPTION : This free Google email group allows users to post the needs of clients, agency updates, and upcoming events. Other members can respond to the email request and help to identify potential resources, share upcoming event information, etc.

TO JOIN : Send your name, agency/group affiliation, and email address to **Stefanie Rathburn** at stefanie.rathburn@hillsdale-isd.org

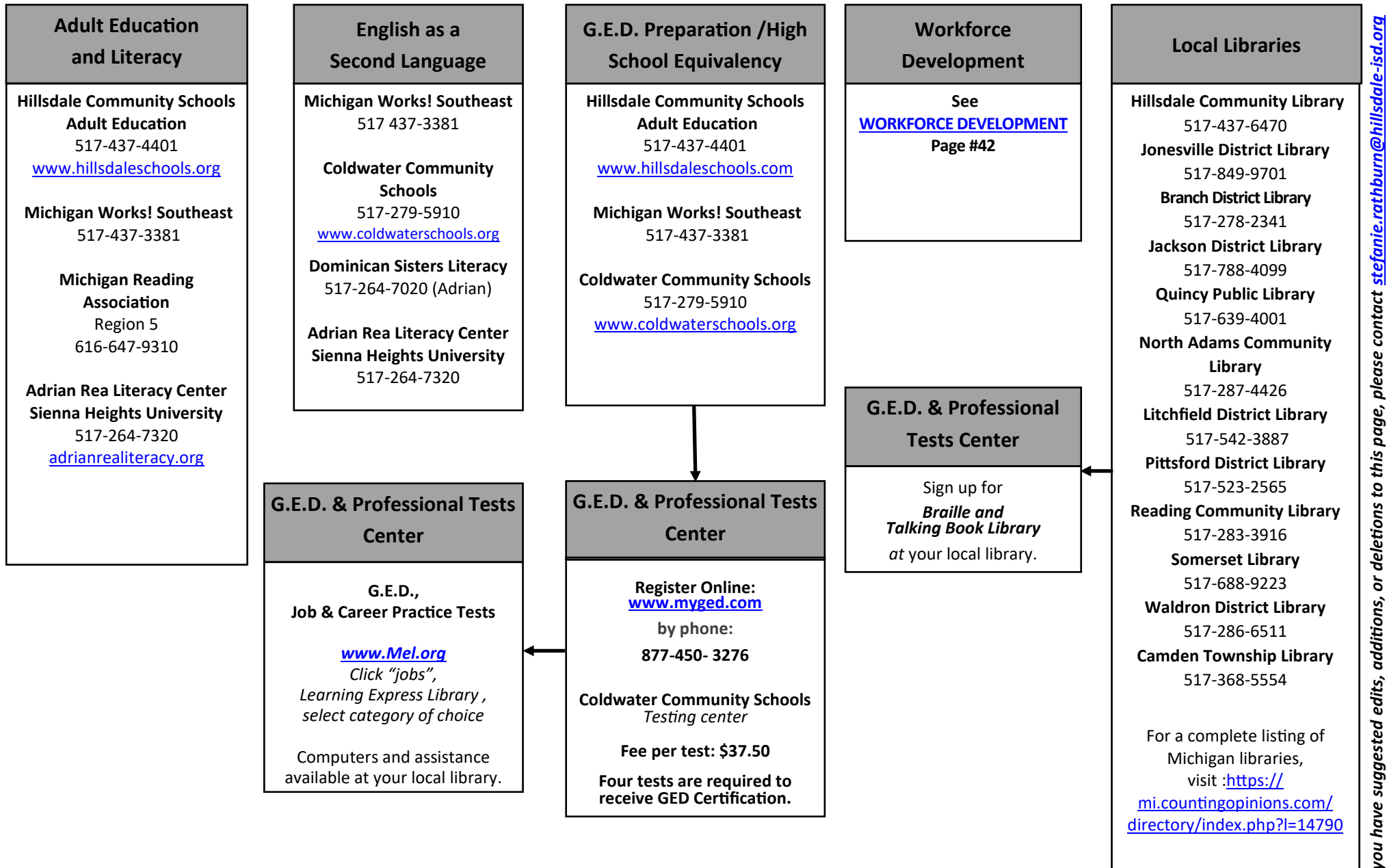
TO POST: Members can email questions, updates, fliers to: hillsdalecountyresources@googlegroups.com

Use the Hillsdale Resources group to ask other professionals about where to find resources
or

services for an individual or family in Hillsdale County when you cannot find one.

*** Please do not disclose any personal client information within group email***

Adult Literacy



[Return to Table of Contents](#)

Children's Literacy

Early Childhood (ages 0-5)

School Age (ages 5+)

Story Time

Library Story Times
See [ADULT LITERACY](#)
page#3 for a
List of LOCAL LIBRARIES

Information

Community Action Agency
517- 437-3346
Early Head Start
Head Start
Great Start Readiness
Programs

Visit [http://
www.greatstarthillsdale.com/
preschool-sign-up.html](http://www.greatstarthillsdale.com/preschool-sign-up.html) to
begin registration process for
any of these programs.

Playgroups & Parent Communities

SEE [PARENT RESOURCES](#)
Page #23

Reading Outside of School

See [ADULT LITERACY](#) Page #3
List of LOCAL LIBRARIES
*for summer reading programs
and special events*

Readiness Activities

Great Start Readiness
Programs
Hillsdale ISD
517-689-1818

District Libraries
Summer Reading Programs
& Special Events

See [ADULT LITERACY](#) Page #3
List of LOCAL LIBRARIES

County Literacy Coaches
[https://www.hillsdale-isd.org/
Page/663](https://www.hillsdale-isd.org/Page/663)

Free Online Activities:

www.Mel.org
Click "kids",
Select from:
Homework Helper,
Storytime,
Games & Activities,
About Michigan

Tutoring and Remediation

Hillsdale College Public
School Tutoring
Email: alandherr@hillsdale.edu
Contact Dean of Men:
Jeffrey Rodgers

Big Brothers Big Sisters
(517) 784-7181 (Jackson)

County Literacy Coaches
[https://www.hillsdale-isd.org/
Page/663](https://www.hillsdale-isd.org/Page/663)

Also:
Contact your local school
district

See [YOUTH RESOURCES](#)
Page #43

Free Online Activities
www.Mel.org
Click "databases" tab at top ,
Learning express library;
select category of choice

Dentists

Keith Jameson, DDS

(517)437-7339

1426 Hudson Rd.

Hillsdale MI 49242

Hours: M, Tu 8 am—5 pm, W, Th 7 am—4 pm

Accepted Insurance: Most insurances

Kendall Lee, DDS

(517)439-5710

111 S. Howell St.

Hillsdale MI 49242

Hours: M, T 8 am—5 pm, W 8 am—2 pm, Th 8 am—5 pm, & F 8 am—12 pm

Accepted Insurance: Most insurances, Medicaid for children only

Matthew McEachran, DDS

(517) 437-0055

3371 W Clarleton Rd.

Hillsdale MI 49242

Hours: M, W, F 7 am—6 pm, Tu 12 pm—6 pm

Accepted Insurance: Most insurances, but they are not in-network, Healthy Kids, Healthy Michigan

Robert Miller, DDS

(517) 439-9394

1 Budlong

Hillsdale MI 49242

Hours: M-F 9 am—5 pm

Accepted Insurance: Most insurances except Medicare, Medicaid

Nicholas Nolan, DDS

(517)437-7339

1426 Hudson Rd.

Hillsdale MI 49242

Hours: M, Tu 8 am—5 pm, W, Th 7 am—4 pm

Accepted Insurance: Most insurances

Todd Ryan, DDS

(517)437 -1000

57 N Howell St

Hillsdale MI 49242

Hours: M-W 7:30 am—5 pm & Th 7:30 am—12 pm

Accepted Insurance: Most private insurances, no Medicaid, Medicare, or state insurance

Michigan Dental, Thomas Pascoe

(517)437 - 2654

20 Care Drive

Hillsdale MI 49242

Hours: M—F 8 am—4:30 pm

Accepted Insurance: All insurances, including uninsured

Jonesville**William Adams, DDS**

(517) 849-9195

211 Harley St.

Jonesville MI 49250

Hours: M—Th 8 am—5 pm

Accepted Insurance: Most private insurances, no straight Medicaid

Sharon Dow, DDS

(517) 849-9195

211 Harley St.

Jonesville MI 49250

Hours: M—Th 8 am—5 pm

Accepted Insurance: Most private insurances, no straight Medicaid

Litchfield**Tru Family Dental****David Betz, DDS**

(517) 849-2411

515 Marshall St.

Litchfield MI 49252

Hours M, Tu, Th 8 am—5 pm, W 8 am—2 pm & F 8 am—1 pm

Accepted Insurance: Most private insurances, no straight Medicaid

Disability Resources

Advocacy Assistance

Michigan Protection & Advocacy Service, Inc.
800-288-5923
517-478-1755

disAbility Connections
(517) 782-6054
www.disabilityconnect.org

St. Paul's Ability Resource Center (SPARC)
517-797-1227
www.sparc-hillsdale.org/

Educational Advocacy:
Michigan Alliance for Families
800-552-4821

The ARC
(information referral for developmental disabilities up to age 26)
269-342-9801

Michigan Department of Education Office of Special Education
517-373-0923

Michigan Special Education Mediation Program (MSEMP)
833-543-7178

Advocacy Assistance Cont

Housing Advocacy:
Fair Housing Center of SE Michigan (Ann Arbor)
877-979-3247

Michigan Department of Civil Rights
800-482-3604 TTY
517-335-3604

Financial Solutions

Department of Health & Human Services
www.mibridges.michigan.gov
517-439-2272
apply at
www.mibridges.michigan.gov

Social Security Administration
www.socialsecurity.gov
800-772-1213
TTY 800-325-0778

Family Support Subsidy
517-789-1200

Employment & Training:
Michigan Works! Southeast
517-437-3381
Michigan Rehabilitation Services (MRS)
517-439-2290

Michigan Career and Technical Institute (MCTI) (through MRS)
877-901-7360

Home/Assistive Devices

Children's Special Healthcare
269-273-2161

disAbility Connections Medical Equipment Loan Closet
517-782-6054

Perennial Park Senior Center
517-437-2422

Region 2 Area Agency on Aging (for seniors only)
(800) 335-7881
See **HEA LTH RESOURCES** - Page #13

Transportation

SEE :
TRANSPORTATION & GAS VOUCHERS
Page #38

Support Groups

disAbility Connections
(517) 782-6054

St. Paul's Ability Resource Center (SPARC)
517-797-1227
www.sparc-hillsdale.org/

SEE
SUPPORT GROUPS
Pages 35-36

Interpretation Services

Deaflink
269-288-0464

Mentoring Programs

Big Brothers Big Sisters
260-456-1600 (Ft. Wayne)

Veterans

Hillsdale County Veterans Services
(517) 437-3630

Information

disAbility Connections
(517) 782-6054

Lifeways Community Mental Health
517-439-2641

The ARC
(educational advocacy)
269-342-9801

March of Dimes (Ann Arbor)
734-761-6331

Shriners (Orthopedic & burns)
800-237-5055

Michigan Protection and Advocacy Service, Inc.
800-288-5923

Alzheimer's Association
800-272-3900

Bureau of Services for Blind Persons
269-337-3848

St. Paul's Ability Resource Center (SPARC)
517-797-1227
www.sparc-hillsdale.org/

[Return to Table of Contents](#)

Call 911

Domestic Violence & Sexual Assault

Page 7

Edited 12/30/19

Rape & Crisis Services

Domestic Harmony
24 hour Line
517-439-1454

National Domestic
Violence Hotline
800-799-7237

Shelter

Domestic Harmony
Emergency Shelter*
1-888-439-1454

24 hour Crisis Line
517-439-1454

Branch County Coalition
Against Domestic Violence
517-278-3356

AWARE Jackson County
517-783-1638

Catherine Cobb (Lenawee)
517-265-6776

Family Promise of
Branch County
517-278-0928

Legal Assistance

Legal Services of
South Central Michigan **
(divorce)
517-787-6111

Crime Victim Assistance
(Personal Protection Orders)
517-439-1419

Domestic Harmony
(Personal Protection Orders &
Court Accompaniment)
517-439-1454

Hillsdale County Victim's
Advocate
(Prosecuting Attorney's Office)
517-439-1419

Supportive Services

Domestic Harmony
24 hour Line
517-439-1454

Domestic Harmony Services
Support Counseling
Individual, Group, and
Children
PPO Assistance
Advocacy

Karen's House
517-523-3526

A Right to Innocence
Self-Help Support Group
517-523-3526

Counseling Batterers

Hillsdale County Probation
Office
517-437-7329

Human Trafficking

National Human
Trafficking Hotline
888-373-7888

National Center for Missing
and Exploited Children
(NCMEC)
800-843-5678

Helping Hands Pregnancy
Resource Center
517-437-7020

Housing Discrimination

Fair Housing Center of SE
Michigan (Ann Arbor)
877-979-3247

NOTES:

* Shelter services for victims of intimate partner violence or sexual assault and their children

** Legal Services clients must meet poverty criteria, does not handle criminal

[Return to Table of Contents](#)

If you have suggested edits, additions, or deletions to this page, please contact stefanie.rathburn@hillsdale-isd.org

Early Childhood (Birth-12 yrs)

Families

Parenting & Advocating

Highfields
517-212-8168
Integro, LLC
517-439-2609

Family Counseling Center
517-437-7100

Information

Community Action Agency
517-437-3346

Hillsdale ISD
517-437-0990

Great Start Collaborative
517-689-1815

Health & Nutrition

BHSJ Community Health Agency
517-437-7395
*WIC, Immunizations,
Peer breastfeeding supports*

CPIF Resource Solutions MIHP
Carick Prevention
734-469-2322
info@cpifrs.org
www.cpifrs.org
Flexible hours Mon—Sun

Hillsdale Hospital
(Pediatrics/Family Med)
517-437-5235

MSU Extension
517-439-9301

Safe Sleep Info & Resources
Child Abuse Prevention and
Awareness
517-437-3100

Childcare

Financial Assistance
Dept. of Health & Human Services
www.mibridges.michigan.gov
269-467-1200

Child Care Network
Greatstarttoquality.org
www.childcarenetwork.org
517-797-4326

Finding Local Child Care
Child Care Network
517-797-4326
Greatstarttoquality.org

Developmental Concerns

Early On (birth– 3yrs)
517-437-0990 ext. 151
Hillsdale ISD Special Education
517-437-0990 ext. 151

Childcare Providers

Licensing

Child Care Licensing
www.michigan.gov/michildcare

Already licensed 517-241-2488

Wanting to become licensed
517-241-2488

Great Start to Quality
Greatstarttoquality.org/educators

Professional Development & Quality Improvement

Child Care Network
517-797-4326

Great Start to Quality
Greatstarttoquality.org

Kindergarten Enrollment

Call the School District
in which you live
for round up info.
See [YOUTH SERVICES](#) Page #43

Community

Volunteer Opportunities

Great Start Parent Coalition
517-689-1816

Community Action Agency
Contact Clint Brugger
517-437-3346 x3231

Basic Needs

Department of Health and Human Services
www.mibridges.michigan.gov
517-439-2200

[Return to Table of Contents](#)

NOTES

A) As of October 1st, 2018 some utility assistance programs require a Decision Notice from the Department of Health and Human Services—Michigan Energy Assistance Program (MEAP)

B) State Emergency Relief for bill utility payment has an annual maximum. Must have shut off notice to access services. Income & asset qualifications apply.

C) Salvation Army utility assistance must have shut off notice or a past due notice. Limited by annual cap

D) Salvation Army Emergency Food requires State ID for everyone over 18, and must be a Hillsdale County Resident

E) State Emergency Relief for mortgage or rent payment has an annual maximum. Must have court ordered eviction notice or foreclosure notice to access services. Income and asset qualifications apply.

Warming/Cooling Centers are heated or cooled facilities where people may go for relief during temporary periods of extreme cold or heat. The facilities provide water and restrooms.

Electric/Gas Bill Payment

Department of Health & Human Services
517-439-2200

State Emergency Relief apply at
www.mibridges.michigan.gov

Hillsdale County VA
517-437-3630

Community Action Agency
517-437-3346

Electric/Gas Bill Payment

CONTACT DHHS FIRST

Department of Health & Human Services

517-439-2200

State Emergency Relief
apply at

www.mibridges.michigan.gov

Community Action Agency
517-437-3346

Wayne County Community Action Agency

313-388-9799

www.waynemetro.org

The Salvation Army
517-437-4240

Hillsdale County VA
517-437-3630

Hillsdale County Senior Services
(60 +)
517-437-2422 x112

TrueNorth Community Services
231-924-0641

United Way of Jackson County
CARE Program
844-220-6098

Assembly of God
(517) 849-2187

Love, INC
517-235-5299

Food Assistance

See [FOOD PANTRIES AND MEALS](#)
page #11 (for complete listing)

Department of Health & Human Services

517-439-2200

apply at
www.mibridges.michigan.gov

St. Anthony's
517-437-3305

The Salvation Army
517-437-4240
Emergency Food
Fresh Produce

Baby Food & Formula
Trinity Lutheran Church
Kings Cupboard
517-437-2647

Helping Hands Pregnancy Resource Center
Earn While You Learn
517-437-7020

Community Assistance Clearinghouse

Love INC
Tuesdays 4:00-7:00 PM
Fridays 11:00 AM-3:00 PM
517-235-5299
Love INC is a collaborative organization which connects residents of the community with the churches which can most effectively assist them

Clothing & Household

The Salvation Army
160 E Bacon St,
Hillsdale, MI 49242
By appointment, M-F 9-12 & 1-3
Clothing voucher (available to anyone, photo ID needed)
Free Household items for fire victims and DASAS clients
Emergency Shelter for fire or disaster victims

Hillsdale Community Thrift
390 W. Carleton
Hillsdale, MI 49242
Mon.—Sat. 9 am—6 pm
Sun. 12—5 pm

Love, INC
517-235-5299
Tues. 4-7 pm & Fri. 11 am—3 pm

Warming/Cooling Centers

Perennial Park— Hillsdale County Senior Services Center
(517) 787-6111
320 W. Bacon Rd.; Hillsdale, MI

Share the Warmth
517-203-9857
427 Maumee St.
Adrian MI
Share the Warmth
Sozo Church Hillsdale
For information or to volunteer, call Penny Myers at: 517-439-5053

Financial Services

Individual Financial Counseling

Community Action Agency
517-437-3346

Habitat for Humanity
517-437-3370

GreenPath Debt Solutions
1-800-550-1961
*Debt Management Program;
Debt repayment– fee for service
Budgeting; Credit Counseling;
Reverse Mortgage Counseling,
Bankruptcy service;
Mortgage Delinquency
Housing Counseling*

Financial Literacy Education

Community Action Agency
517-437-3346
Home Buyer Education

Chemical Bank
517-439-1790
Home Buyer Education

County National Bank
517-439-4300
Financial Literacy

Fifth Third Bank
(517) 437-7308
Financial Advising

Credit Rebuilding

Community Action Agency
517-437-3346

Habitat for Humanity
517-437-3370

GreenPath Debt Solutions
1-800-550-1961
*Debt Management Program;
Debt repayment– fee for service*

Chemical Bank
517-439-1790
CD Credit Builder Loan

Budgeting

Community Action Agency
517-437-3346

Habitat for Humanity
517-437-3370

GreenPath Debt Solutions
1-800-550-1961
Fee for service

Vear Accounting
517-439-5555
Fee for service

Representative Payeeship: Guardian; Payee; Conservatorship

Hillsdale County Probate Court
517-437-4321

Perennial Park– Guardianship Services
517-437-2422

Area Agency on Aging Region 2
800-335-7881

Tax Filing

Area Agency on Aging Region 2
800-335-7881

Community Action Agency
Volunteer Income Tax Assistance
517-437-3346

Mortgage and Property Tax Foreclosure Counseling

Community Action Agency
517-437-3346

Food Pantries and Meals

Severe Weather Closings:

- If schools are closed for inclement weather, community pantries & meals will cancel.
- Check for weather related delays/closings via tv and radio stations: WCSR AM1340,

| Hillsdale | |
|---|--|
| <p>El Bethel Food Pantry 1661 Hudson Rd. Hillsdale, MI 49242 (517) 437-3639 <i>Wednesday 10 AM—3 PM</i> Must bring ID</p> <p>Hillsdale Baptist Church 2211 W Bacon Rd Hillsdale, MI 49242 (517) 439-9711 <i>Tuesday 9-11 AM</i> Must bring ID</p> <p>Trinity Lutheran Church Kings Kupboard 69 Griswold St Hillsdale, MI 49242 (517) 437- 2647 <i>October-April:</i> <i>Monday, Wednesday, & Friday,</i> <i>3:30-5:30 PM</i> <i>May-September:</i> <i>Monday & Friday, 3:30-5:30 PM,</i> <i>Wednesday, 6-8 PM</i></p> <ul style="list-style-type: none"> • Must be Hillsdale County Resident • Must arrive by 5:20 p.m. in order to be served | <p>Salvation Army 160 E Bacon St Hillsdale, MI 49242 (517) 437-4240 <i>Monday through Friday 9 AM-12 PM</i> <i>& 1-3 PM by appointment</i> <i>Can receive service once ever 60 days, need photo ID</i></p> <p>St. Anthony Family Center 11 North Broad St. Hillsdale, MI 49242 (517) 439-3305 <i>Tuesday 12:30-2 PM</i> <i>Friday 9:30-11 AM</i> Can receive food service once per month, need photo ID</p> <p>DHHS Food Stamps 40 Care Dr Hillsdale, MI 49242 (517) 439-2200 7:30 AM—5 PM www.michigan.gov/mdhhs</p> |

| Other |
|---|
| <p>Women, Infants, Children 20 Care Drive Hillsdale, MI 49242 (517) 437-7395</p> |

Foster Care Resources

Page 12

Edited 1/24/20

Resources for CPS and others working with children in foster system

To learn more about becoming a foster parent call

DHHS Office
Licensing: 517-437-3346
Or

Michigan Foster Care Navigator Program
Fcpn.org / 855-MICKIDS

Resources For Foster Parents

Michigan Department of Health and Human Services
www.michigan.gov/dhslicensing
517-439-2200

Foster Parent Support Group St. Joseph
517-932-8801

Hillsdale County Great Start Collaborative Parent Coalition
517-689-1816

Lifeways Community Mental Health
517-439-2641

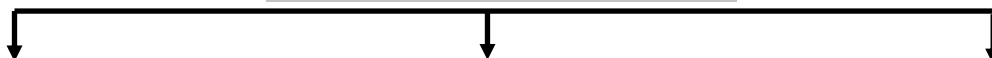
The Office of Children's Ombudsman
1-800-MICH-FAM

Child Abuse and Prevention Hillsdale County
Parenting classes (continuing ed. Hours)
517-437-3100

BHSJ Community Health Agency
517-437-7395
WIC, Immunizations, Children's Special Healthcare Services

Adoption Resources
PARC (Post Adoption Resource Exchange)
Parc-judson.org / 734-794-2988

MARE
(Michigan Adoption Resource Exchange)
Mare.org / 800-589-6273



Shelter & Housing

Domestic Harmony Emergency Shelter
1-888-439-1454

Licensing and Placement

Parents interested in licensing home for fostering can call:

Department of Health and Human Services Licensing:
517-439-2200

www.michigan.gov/mdhhs/0,5885,7-339-73971_7117---,00.html

or

Michigan Foster Care Navigator Program
Fcpn.org / 855-MICKIDS

Licensing and Placement

Bethany Christian Services Kalamazoo
269-372-8800

Catholic Charities Ann Arbor
734-971-9781

Family Service & Children's Aid Jackson
517-787-7920

Samaritas Jackson
517-230-0810

Assessment & Treatment Services

Mental Health

Lifeways Community Mental Health
517-439-2641 or 800-284-8288

Domestic Harmony

24 hour Line: 517-439-1454

Southwest Michigan Children's Trauma Assessment Center
Kalamazoo: 269-387-7073

Samaritas Trauma Assessment Jackson
517-789-6444

Educational/Developmental

Hillsdale Intermediate School District
517-437-0990 ext. 151

Substance Abuse

Alcoholics Anonymous
517-789-8883

Lifeways Community Mental Health
517-439-2641

McCullough, Vargas and Associates
517-849-2333

Employment

Michigan Rehabilitation Services
517-439-2290

Michigan Works! Southeast
517-437-3381

Information, Resources, Support

Department of Health and Human Services
mibridges.michigan.gov
517-439-2200

Lifeways : 517-439-2641

Hillsdale Prosecutor's Office
517-439-1419

BHSJ Community Health Agency (WIC)
517-437-7395

Very Important Parents
Helping Hands Pregnancy Resource Center
517-437-7020

Friend of the Court: 517-437-4111

Michigan Youth Opportunities Initiative
517-212-0676

Legal Services of MI : 517-787-6111

Perennial Park: 517-437-2422

Family Service and Children's Aid
517-787-7920

[Return to Table of Contents](#)

If you have suggested edits, additions, or deletions to this page, please contact stefanie.rathburn@hillsdale-isd.org

Health Resources

Walk in Clinics

Hillsdale Health and Wellness
517-437-7040

Jonesville Healthcare Plus
517-849-7166

Hospitals

Hillsdale Hospital
517-437-4451

In-Home Care/End of Life

In Home Care/End of Life
Hospice of Hillsdale
517-437-5252

Hospice of Lenawee
269-278-6108

Veterans only: 517-263-2323

**Call Area Agency on Aging
for more providers**
517-592-1974

Diabetic Needs

Foot Care
Rohacz Center for Foot Care
517-439-3338

Dr. Maria Bidny
517-437-4777

**Diabetic
Nutrition & Education**
MSU Extension
517-439-9301

Area Agency on Aging
*Evidence Based
Health & Wellness Programs*
517-592-1974

Meds Packaging

Nash Drugs

Hillsdale 517-437-4497
Jonesville- 517-849-9804

*Blister Packing
Compounding
Delivery
Medication Management*

DRUG TAKE BACK BOXES
OTC & prescription meds only-- no sharps
See **SUBSTANCE USE DISORDER
SERVICES** Pages 33-34

Medical Equipment

Loan
disAbility Connections
517-782-6054

Perennial Park Senior Center
517-437-2422

Surplus Health Supplies For Missions
info@surplushealthsupplies.org

Hillsdale Veterans Services
Phone: 517-437-3630

Purchase
Hillsdale Home Oxygen and Respiratory
(517) 437-8371
CareLinc
Coldwater: 800-752-9571
Hillsdale: 517-437-3226
Medwest Medical Supply
517-437-2061
LinCare Inc.
517-279-2409

Hearing & Vision

Area Agency on Aging
517-592-1974
Resource referral

BHSJ Community Health Agency
517-437-7395
Children's hearing & vision screens

Gossage Eye Institute
517-439-2020

Hillsdale Optometry
517-437-3365

Jonesville Eye Care
517-849-9277

Bureau of Services for Blind Persons
517-241-1100

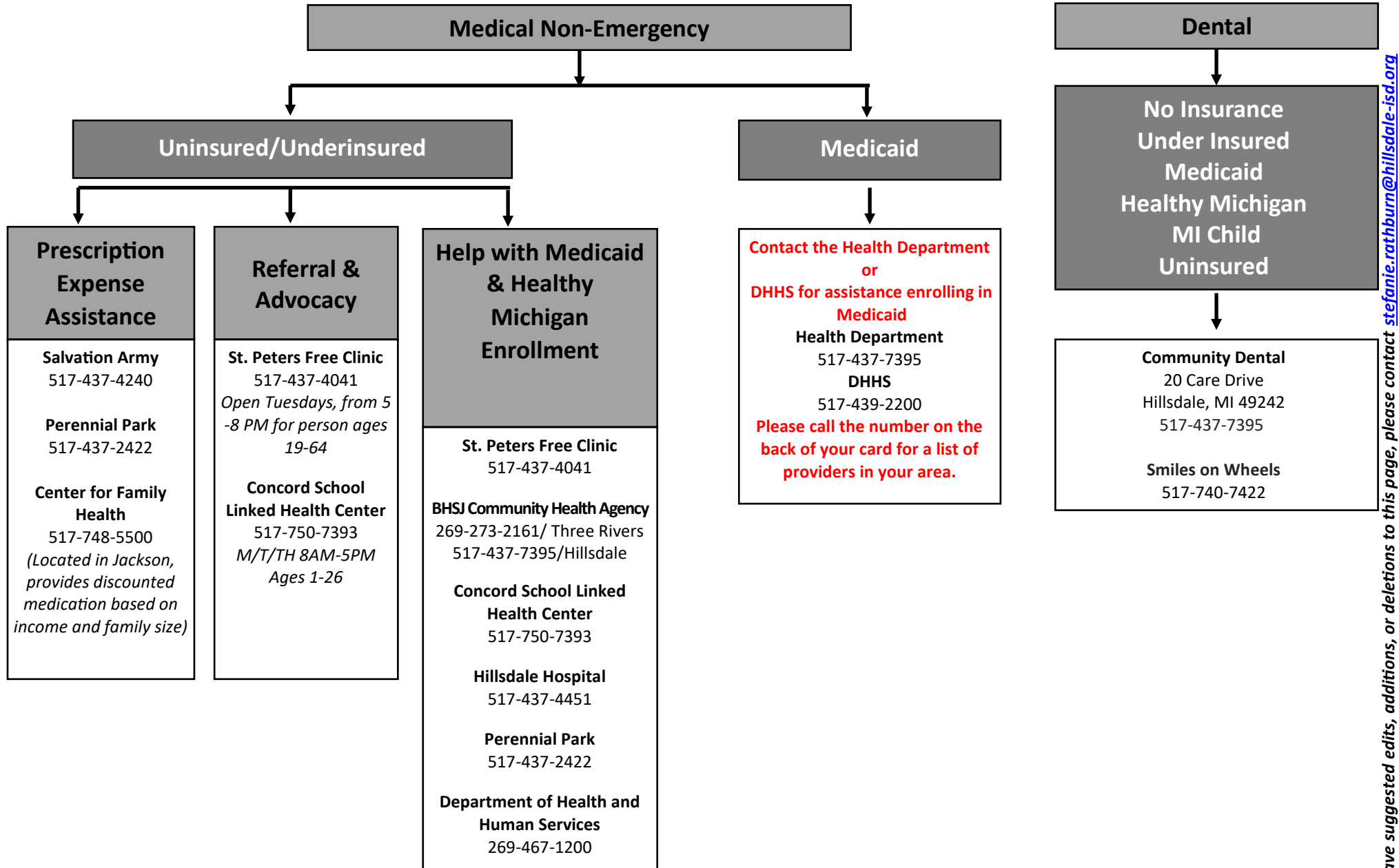
Lion's Club
Hillsdale and Jonesville Clubs
Hillsdale: 517-523-2266
Jonesville 517-962-8570

**IF AN EMERGENCY
Call 9-1-1**

Healthcare & Dental for the Uninsured

Page 14

Edited 7/24/19



[Return to Table of Contents](#)

If you have suggested edits, additions, or deletions to this page, please contact stefanie.rathburn@hillsdale-isd.org

Housing (Apartment Listings)

| Apartment Name | Phone Number | Senior/Disabled | Subsidized | HCV Accepted |
|--------------------------------------|----------------|-----------------|------------|--------------|
| Center City Senior Residences | (517) 797-4963 | (55+) | | |
| Hillsdale Garden Apartments | (517) 437-7501 | X | X | X |
| Cherry Tree Village & Apartments | (517) 437-7788 | X | X | X |
| Whitney Estates Apartments | (517) 437-0555 | X | | X |
| Greenwood Village Apartments | (517) 437-2217 | X | | X |
| Beacon Hill Townhomes | (517) 437-2177 | X | X | |
| Beacon Hill Highrise | (517) 437-2177 | (62+) or SSI | X | |
| Carriage Park Apartments | (517) 439-9555 | not accessible | | |
| Apple Run Apartments | (517) 437-2366 | | | X |
| Spring Meadows Apartments | (517) 437-3220 | X | X | |
| Walnut Junction | (517) 849-2646 | | | |
| Riverside Apartments (Litchfield) | (517) 542-2210 | X | X | |
| Meadow Lands Apartments (Reading) | (517) 283-2716 | X | X | |
| Parkwood Apartments (Jonesville) | (517) 849-2950 | | X | |

Housing Assistance

For school-aged youth affected by homelessness, contact 517-278-7233

Low Cost Homes

Habitat for Humanity
517-437-3370

USDA Rural Development
517-849-9890

Subsidized Housing (Rent Based on Income)

See [HOUSING ASSISTANCE
\(APARTMENT LISTINGS\)](#)

Page #17

Emergency Shelter

Share the Warmth
Sozo Church Hillsdale
517-439-5053

Community Action Agency
517-437-3346 (Hillsdale)
517-784-4800 (Jackson)

Love, INC.
517-235-5299

American Red Cross
517-484-3799/800-382-6382
Disaster Victims

Salvation Army
517-437-4240
Disaster Victims only

**Domestic and Sexual Abuse
Services (DASAS)**
24 hour Crisis Line
800-828-2023

Home Rehabilitation

**Department of Health &
Human Services**
517-439-2200
State Emergency Relief
apply at www.mibridges.michigan.gov

Habitat for Humanity
517-437-3370
Region 2 Area Agency On Aging
Home Repairs for seniors (60+)
(517) 592-1974

USDA Rural Development
517-849-9890

Ramps
Region 2 Area Agency On Aging
(517) 592-1974

**Home Repair & Weatherization
for Seniors 60+**
Region 2 Area Agency On Aging
517-592-1974

Community Action Agency
517-437-3346

USDA Rural Development
517-849-9890

Yard (chores) Services
A Few Good Men
517-398-1949

Safety Checks:
Region 2 Area Agency On Aging
517-592-1974
disAbility Connections
517-782-6054

Rent or Mortgage Payment Assistance

**Department of Health &
Human Services ***
517-439-2200
State Emergency Relief apply at:
www.mibridges.michigan.org

Love, INC
517-235-5299

* State Emergency Relief for mortgage or rent payment has an annual maximum. Must have court ordered eviction notice or foreclosure notice

Eviction Prevention

Community Action Agency
517-784-4800

**Department of Health
& Human Services**
517-439-2200

**Fair Housing Center of
Southeast Michigan**
517-437-3346

**Legal Services of
South Central Michigan**
734-665-6181

Love INC
517-235-5299

Veterans

SJC Veterans Services
Hillsdale Co. Government
517-437-3630

Supportive Services for Veteran Families
Volunteers of America
877-509-8387

Homeless Veteran Crisis Line
1-877-424-3838

Housing Discrimination

**Fair Housing Center of
Southeast Michigan**
Community Action Agency
517-437-3346

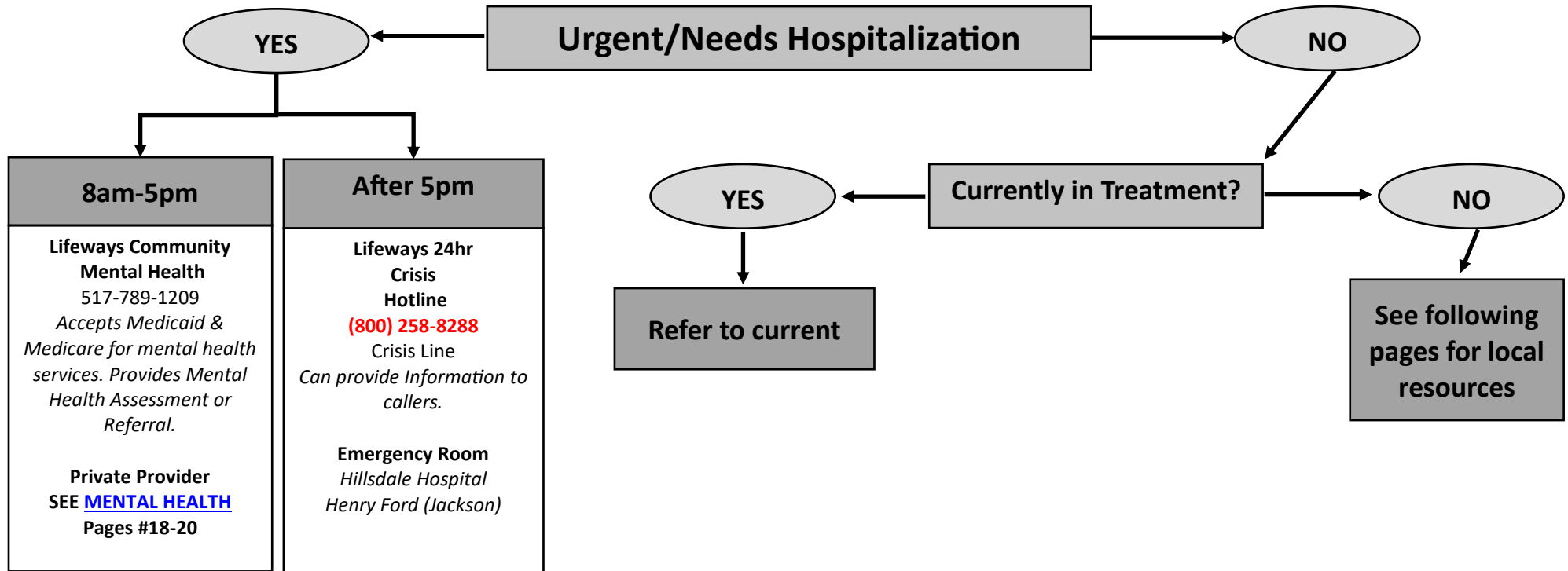
Homeless Rapid Rehousing

Community Action Agency
517-784-4800

**Training and Treatment
Innovations**
517-782-0010

[Return to Table of Contents](#)

Mental Health



Mental Health

Psychiatric Provider List

Psychiatrists

Hillsdale Hospital

517-437-5363

Ravinder Sharma, M.D.

Inpatient Only

168 South Howell Street

Hillsdale, Michigan 49242

Medicaid, Medicare, Private Insurance

Henry Ford Allegiance Behavioral Health

517-789-5971

205 N. East Ave, Jackson, MI 49201

Hours: M—Th 7 am—5:30 pm & F 7 am—4:30 pm

Most Medicaid plans and private insurances

Oaklawn Psychological Services

269-781-9119

15209 W. Michigan Ave. Marshall, MI 49068

Hours: M, T, W, Th 9 am—5:30 pm & F 9 am—5 pm

Medicare, standard Medicaid, most private insurances; does not accept Meridian or other Medicaid Health Plans

Behavioral Health Care, PC

269-969-6108

363 Fremont St., Suite 300

Battle Creek, MI 49017

Medicare, BCBS, Aetna, Priority Health,

Cofinity, Meridian Medicaid (NO

MEDICAID OTHER THAN MERIDIAN)

Adrian Counseling Clinic

517-263-5810

142 E. Maumee St. Suite 107

Adrian, MI 49221

Most commercial insurance NO MEDICAID

Professional Psychological & Psychiatric Services

517-513-3657

1200 N West St., Suite 812

Jackson, MI

Most commercial and Medicaid insurance plans, uninsured

Some Patients may qualify for psychiatric

Services at Lifeways Community Mental

Health- 517-439-2641

University of Michigan

Ambulatory Psychiatry Services

734-764-0231

4250 Plymouth Rd.

Ann Arbor, MI 48109

Most insurances. Does not accept standard Medicaid.

Mental Health Counseling Provider List

Page 19
Edited 6/22/20

McCollough, Vargas, & Assoc.

517-849-2330
110 Reading Ave., Jonesville
Specialty Services: Substance Abuse Counseling, ADULTS
All Medicaid, most private insurances
M-F 8AM-5PM

Integro

517-439-2609
1360 S Hillsdale Rd., Hillsdale, MI 49242
Specialty Services: Trauma Focused CBT, IMH 0-3, Outpatient, Adults & Children
Meridian, Aetna, Magellan, BCBS, Medicare, BCN, UHC
M-F 8AM-5PM

Michelle Liska, LMSW, CAADC

517-414-7749
101 E. Bacon Street, Hillsdale, MI 49242
Specialty Services: Individual and couples, sexual behavior, substance abuse, domestic violence, acupuncture, guardianship assessments, Adults & Adolescents
BCBS, Medicare, Priority Health
By Appointment

Gayle Seely, LPC

517-437-0309
44 S. Broad St., Hillsdale, MI 49242
Specialty Services: Outpatient, therapy (individual and couples), substance abuse; Adults & Children
Ameriplan, sliding fee scale
By Appointment

Susan Christine Sebring, LPC

269-268-6590
44 S. Broad St., Hillsdale, MI 49242
Specialty Services: Outpatient, therapy (individual and couples), substance abuse, DBT, Adults & Children (over 8)
All Medicaid plans except standard Medicaid, McLaren, Priority Health, Magellan, PHP, Ameriplan, BCBS, NOT BCN
Tuesday 8 AM –8 PM

Lifeways Community Mental Health

517-439-2641
25 Care Drive, Hillsdale, MI 49242
Medicaid and Medical Health Plans
M-F 8AM-6PM

Segue

517-437-0117
3200 W Carleton Rd., Hillsdale, MI 49242
Specialty Services: Certified Peer Support Services Outpatient, Substance Abuse, Domestic Violence, Integrated Dual Diagnosis Treatment, Assertive Community Team, Case Management Services
Medicaid and Medical Health Plans By Appointment

Highfields, Inc.

517-783-4250
51 S Howell St., Hillsdale, MI 49242
Specialty Services: Outpatient, Adults & Children, IMH 0-3, Attachment, Trauma Focused CBT, Home Based Services, PMTO, Autism
Medicaid and Medical Health Plans
By Appointment

Amber Norwood

517-615-1433
51 S. Howell St., Hillsdale, MI 49242
Specialty Services: Domestic violence, substance abuse, trauma, parenting, children and attachment
All Medicaid plans except standard Medicaid, Aetna, McLaren, Priority Health, Magellan, PHP, Ameriplan, BCBS, Blue Care Network, Cofinity, HAP, Medicare, sliding fee scale
By Appointment

Moore Counseling Services

517-320-5657
30 N Howell St., Hillsdale MI 49242
Specialty Services: ADHD, substance abuse, sex offenders, anger management, bereavement, family, PTSD; Adults & Children
Most insurances including straight Medicaid
By Appointment

Hope for Change

517-212-4052
30 N Howell St. Suite 21B; Hillsdale MI 49242
Specialty Services: individual and family counseling; adults and children
Dependent on provider: BCBS, all Medicaid plans, UHC, Priority Health, Medicare, Tri-care, private pay and sliding fee scale
By appointment

John Hand & Associates

517-826-5061
100 E. Chicago St. Jonesville, MI 49250
Specialty Services: Outpatient, therapy, psychological testing, ADHD testing, guardianship testing; Adults & Children
Most Medicaid (plans and private insurances, does not accept standard Medicaid or Molina
MTWF 8 AM - 5 PM, TH 8 AM -7 PM

Renee Batt Counseling, LLC

517-425-8188
44 S. Broad Street, Hillsdale, MI
Specialty Services: Outpatient therapy for individuals and couples, and families; Adults & Children
Meridian, Medicare, BCBS, Cofinity, Aetna, ASR
By Appointment

Jill Cleveland, MA, LPC, CAADC

517-225-1159
79 N. Broad Street, Hillsdale, MI 49242
Outpatient therapy for individuals and couples, Christian counseling, substance abuse, CBT; Adults & Children (over 6)
Meridian, Magellan
By Appointment

[Return to Table of Contents](#)

Mental Health

Counseling Supports

Helping Hands Pregnancy Resource Center

517-437-7020

46 S. Howell St, Hillsdale

Specialty Services: Pregnancy/Parent Support

Free of Charge

10AM-6PM Daily

Catholic Charities

517-782-2551 (Jackson)

517-782-2551 (Adrian)

517-263-2191 (Hillsdale)

3425 Francis Street, Jackson

199 North Broad Street, Adrian

Specialty Services: Play therapy, Domestic violence, Abuse and neglect issues, ADHD

Conduct disorders, Depression, Anxiety, Personality disorders, Grief and loss, Relationship issues, Substance abuse, Sexual offenses, Eating disorders, Self-harmful behavior and more

Insurance and Payment varies depending on services

9AM-7PM Daily

Domestic Harmony

517-439-1454

Call for Location

Specialty Services: Domestic Violence/Sexual Assault

No Charge for Services

Counseling by Appointment

Hillsdale Drop In Center

517-439-9730

76 W. Carleton, Hillsdale

Specialty Services: place for people to feel at home and feel that they have a family

Open to consumers receiving Lifeways and provider services

Health Resources—Community Health Events

These community health /resource events generally take place during these months each year.

January: Positive Parenting Awareness Month

February

March: Reading Month, Parenting Awareness Month

April: National Volunteer Appreciation Month, Child Abuse Awareness & Prevention Month, Week of the Young Child, Autism Awareness Month

May: May 12 –18 - National Prevention Month, May 6th—National Children’s Mental Health Awareness Day, Foster Care Awareness Month, Asthma Awareness Month

June

July

August: Overdose Awareness 8/31, National Immunization Awareness Month,

September: Safe Sleep Awareness Month, Deaf Awareness Month, NICU Awareness Month

October: Domestic Violence Awareness Month, Fire Safety Month,

November: Homeless Awareness Month

December

Ophthalmology

David Gossage, DO
Karen M. Luparello, DO
Mark E. Kosciuszko, OD
517-439-2020
50 W. Carleton Rd.
Hillsdale MI 49242
Hours: M-Th 8 am—5 pm & F 8 am—4 pm
Accepted Insurance: most insurances

Hillsdale Optometry
CW Amburgey
Robert Brichta
Elaine Brichta
517-437-3365
43 S. Howell St.
Hillsdale MI 49242
Hours: M, Tu, Th, F 8 am—5 pm, W 9 am—6 pm & Sa 8 am—12 pm
Accepted Insurance: most insurances, except MVA

Jonesville Eye Care
Michael Biddle, OD
Anthony Smith, OD
517-849-9277
461 Olds St.
Jonesville MI 49250
Hours: M 8 am—5 pm, Tu, F 9 am—5 pm, W 11 am—7 pm, Th 1—5 pm, 1st and 3rd Sa 9 am—12 pm
Accepted Insurance: most insurances

RX Optical of Jonesville
517-849-2200
855 Olds St.
Jonesville MI 49250
Hours: M—Th 9:30 am—8 pm, F 9:30 am—6 pm & Sa 9 am—4 pm
Accepted Insurance: most insurances, except straight Medicaid

Wal-Mart Vision Center
517-849-7020
701 Olds St.
Jonesville MI 49250
Hours: M-F 9 am—7 pm, Sa 9 am—6 pm & Su 12 pm—5 pm (vision center hours—doctor hours vary)
Accepted Insurance: most insurances, except Medicaid, Medicare

Parent Resources

Playgroups

Hillsdale
Great Start Collaborative
PLAY (Parents Learning About Young Children)
517-689-1815
Playgroups held monthly
<http://www.greatstarthillsdale.com/calendar-of-events.html>

Hillsdale Free Methodist Kid's Club
517-437-2251
Wednesdays 6:45-8:05 PM

Car Seat Inspection Stations

Branch -Hillsdale-St. Joseph Community Health Agency
Call to schedule an appointment.
517-279-9561
Contact: Kelley Mapes

State Police— Jackson (517) 780-4580

Parent Groups

Hillsdale County ISD Great Start Collaborative
517-689-1815
310 W. Bacon Street, Hillsdale
Family Meal, Childcare, and mileage reimbursement are available as needed; held monthly
<http://www.greatstarthillsdale.com/calendar-of-events.html>

Facebook:
<https://www.facebook.com/GreatStartHillsdaleCounty/>

Hillsdale County ISD Parent Advisory Committee
For parents of children with developmental disabilities or special needs
(517) 689-1808

Hillsdale County Down Syndrome Support Group
517-439-8351
Contact Paula Hayne for meeting info

Foster / Adoptive Parent Group
517-932-8797
Meets 3rd Monday
Potluck starts at 5:30
Meeting 6:00- 8:00

Little Village Nursing Circle
517-617-5585
11 E Bacon St.; Hillsdale
1st and 3rd Friday 10 a.m.
4th Monday 5:30 p.m.

Maria Ansett Amey Little
Breastfeeding Support
517-523-3526

Resources

St. Paul Ability Resource Center (SPARC)
Provides programs and support for children and adults in Hillsdale with developmental Disabilities
517-797-1227

Great Lakes Center for Autism Treatment & Research (2-21yrs)
Residential Opportunities
269-250-8200

Lifeways
Autism Waiver (18 months to 21 years)
517-439-2641

Helping Hands Pregnancy Resource Center
517-437-7020
*Classes, parent training, Dad training
Baby gear and clothing, Baby Food, Cereal, Formula, post partum support*

Community Fatherhood:
*Helping Hands Pregnancy Resource Center
Very Important Parents*
517-437-7020

BHSJ Community Health Agency
517-437-7395
Immunizations, WIC, Dental & Breastfeeding Support Group, Children's Special Health Care Services

Breastfeeding Information Warm Line
517-617-5585

Early On/Hillsdale County ISD
517-437-0990 ext. 151
Free vision, hearing & developmental screenings

Infant Mental Health
Highfields—517-212-8168
Integro- 517-439-2609

Safe Kids Worldwide
Safekids.org

St. Anthony Family Center
517-437-3305
St. Elizabeth Fund
Assistance with "extraordinary needs" of

Physicians

Kwasi Boakye, O, MD—Internal Medicine
(517)437-7800

451 Hidden Meadows Drive; Suite 210
Hillsdale MI 49242

Hours: M-Th 8:30 a.m.—5 p.m. &
F 8:30 a.m.—3 p.m.

Accepted Insurances: Most insurances

**Hillsdale Pulmonary Critical Care &
Sleep Medicine**

Tariq Abdelkarim (Dr. Karim)

(517) 437-3879

3271 W. Carleton Rd.

Hillsdale MI 49242

Hours: M-F 9 am —5 pm

Accepted Insurances: Most insurances

Alfred Bediako, MD—OBGYN

(517) 437-5390

1711 S. Hillsdale Rd.

Hillsdale MI 49242

Hours: M, Tu, Th 9 am—5 pm & W, F 9
am — 12 pm

Accepted Insurances: Most insurances

Molly Parker, DO—Family Practice

(517) 437-8333

240 W Carleton Rd.

Hillsdale MI 49242

Hours: M-Th 8 am—4:30 p.m. &
F 8 am—12 pm

Accepted Insurances: Most insurances,
limited Medicaid

Robert Schall, MD—Family Practice

(517) 437-3361

32 S Broad St.

Hillsdale MI 49242

Hours: M-Th 8 am—6 pm

Accepted Insurances: Most insurances

Dustin Kimball—Family Practice

(517)439-0044

451 Hidden Meadows Dr. Ste. 120

Hillsdale MI 49242

Hours: M-Th 8 am—5 pm & F 8:30 am—
12:30 pm

Accepted Insurances: Most insurances,
except Medicaid

Jonesville Health Care

(517) 849-7100

216 Olds St.

Jonesville MI 49250

Hours: M—F 8 am—5 pm

Accepted Insurances: Most insurances

Jonesville Health Care Plus

(517) 849-7166

216 Olds St.

Jonesville MI 49250

Hours: M—Th 8:30 am—4:30 pm & Sa
9 am—12 pm

Accepted Insurances: Most insurances

Scott Gutowski, DO
Jeffrey Toner, DO, FAAFP
Sue Hager, FNP
Karl Wolfe, PAC
Matthew Dillon, PAC
Saddi Turner, FNP

Troy Davis, MD—Family Practice

(517)542-3217

413 N Chicago Rd.

Litchfield MI 49252

Hours: M—Th 9 am—5 pm

Accepted Insurance:

Reading

Reading Clinic

Paige Jamison, NP

(517) 283-1772

124 S Main St.

Reading MI 49274

Hours: M—Th 8:30 am—5 pm &

F 8 am—4 pm

Accepted Insurances: Most insurances

Litchfield

Litchfield Clinic

Kurt Roেকে, DO

(517) 330-3000

535 Marshall St.

Litchfield MI 49252

Hours: M 8 am—6 pm,

T—Th 8 am—4 pm

Accepted Insurances: Most insurances

Physicians

Hillsdale Pediatrics Center

(517) 437-8325
451 Hidden Meadows, Ste, 200
Hillsdale MI 9242
Michael Sackman, MD
Hours: M-F 8:30 am—5:30 p.m.
**Accepted Insurance: Medicaid,
Priority Health, United Health**

The Pediatrics Place

(517) 437-5385
39 North St.
Hillsdale MI 49242
Nicole Ellis, DO
Hours: M— F 9 am—5 pm
Sat 9 am—12 pm (Labor Day—
Memorial Day)
**Accepted Insurance: Most insur-
ances, most Medicaid plans**

Hillsdale Family Practice

(517) 437-0010
451 Hidden Meadows
Hillsdale MI 49242
Dustin Kimball, DO
Karen Lindower, DO
Debra Lusty, DO
Hours: M—Th 8:30 a.m.—5 p.m. &
Fri. 8:30 a.m.—12:30 p.m.
**Accepted Insurance: Most insur-
ances, no new Medicaid patients**

Health & Welnness Primary Care & Walk-in Clinic

(517) 437-7040
240 W. Carleton Rd.
Hillsdale MI 49242
Hours: Open 7 days per week 8 a.m.
—8 p.m.; walk-in 12 p.m.—8 p.m.
**Accepted Insurance: Most insuranc-
es, limited Medicaid**

Hillsale Medical Associates

(517)439-0200
1456 Hudson Rd.
Hillsdale MI 49242
Dan McCance, DO (Gastroenterology)
Keith Baker, MD (Internal Medicine)
Rachel Gier, NP
Hannah Burkhart, FNP
Kara Wilson, PAC
Hours: M— F 8 a.m.—5 p.m.
Accepted Insurance: Most insurances

Hillsdale Hospital

(517) 437-4451
168 S. Howell St.
Hillsdale MI 49242
Hours: 24 hours per day, 7 days per
week
Accepted Insurance: Most insurances

Hillsdale Surgical Group

(517)437-5350
451 Hidden Meadow Dr., Ste. 260
Hillsdale MI 49242
Daniel Baxter, DO
Norris March IV, DO
Dale McCririe, DO
Hours: M—F 8:30 a.m.—4:30 p.m.
Accepted Insurance: Most insurances

Maria Bidny, DPM—Podiatry

(517)437-4777
1340 S. Hillsdale Rd.
Hillsdale MI 49242
Hours: M 10 a.m.—6 p.m. & Tu, Th 9
a.m.—5:30 p.m. & F 9 a.m.—12 p.m.
**Accepted Insurance: Most insurances,
limited Medicaid**

David Levitsky, DPM—Podiatry

(517) 849-2029
211 Harley St.
Jonesville MI 49250
Hours: Tu 8 a.m.—5 p.m., Th 10 a.m. -
2 p.m.
**Accepted Insurance: Most insurances,
except Medicaid**

Eugene Rohacz, DPM-Podiatry

(517) 439-3338
241 W Carleton
Hillsdale MI 49242
Hours: M, Tu, Th 9 a.m.—5 p.m.

Hillsdale Orthopedics

(517)439-5411
61 W. Carleton Rd.
Hillsdale MI 49242
Hours: M-Th 8 a.m.—5 p.m. & F 8 am
to 12 pm
Accepted Insurance: Most insurances

Alex Janusz, DO—Neurology

(517) 437-8366
451 Hidden Meadows Dr.
Hillsdale MI 49242
Hours: M, Tu, W, F 9 am 4:30 pm
Accepted Insurance: Most insurances

Tanish Wadhwa, MD—Pulmonology

Gregg Patten, MD—Pulmonology
(517)437-8366
451 Hidden Meadow Dr.
Hillsdale MI 49242
Hours: Th 8am—12 pm
Accepted Insurance: Most insurances

Victor Owusu, MD—Cardiology

(517) 439-1850
17 S Manning St.
Hillsdale MI 49242
Hours: M-F 8:30 am—4:30 p.m.
Accepted Insurance: Most insurances

CALL 9-1-1 FOR EMERGENCY

Police/Fire/Emergency

Page 26

Edited 7/24/19

Poison Control

National Poison Control Center
800-222-1222

Environmental Emergency

Branch -Hillsdale- St. Joseph
Community Health Agency
(517) 437-7395

Pollution Emergency Alerting System
(PEAS)
24 hour line: 800-292-4706

Animal Control

Hillsdale County Sheriffs Office

517-437-7317

*Animal Complaints handled by
central dispatch*

Fire Departments

Hillsdale City Fire Department
517-437-6451

Hillsdale Rural Fire Dept.
517-437-4322

Hudson Fire Department
517-448-2231

Quincy Fire Department
517-639-5403

Reading Fire Department
517-283-3528

Camden Fire Department
517-368-5129

Pittsford Fire Department
517-523-2432

North Adams Fire Department
517-287-4700

Litchfield Fire Department
517-542-3477

Somerset Fire Department
517-688-4406

Allen Fire Department
517-869-2607

Jonesville Fire Department
517-849-9451

Montgomery Fire Department
517-296-4267

Moscow Fire Department
517-688-9707

Jefferson Fire Department
517-523-2432

Waldron Fire Department
517-286-6611

Wright-Waldron Fire Dept.
517-286-6611

Police Departments

Hillsdale County Sheriff's Department
517-437-7317

Hillsdale Police Department
517-437-6481

Quincy Police Department
517-639-2545

Reading Police Department
517-283-3133

Camden Police Department
269-496-8096

Litchfield Police Department
517-542-3700

Somerset Police Department
517-688-9223

Coldwater Police Department
517-279-9871

Jonesville Police Department
517-849-2101

State Police (Jonesville)
517-780-4580

Car Seat Inspection Stations

See [PARENT RESOURCES](#) Page #23

Ambulatory Agencies

CALL 9-1-1

Reading Emergency Unit (Hillsdale)
517-283-2856

Wright-Waldron EMS
Village of Waldron
517-286-6611

Somerset EMS
517-688-4406

Addison EMS
517-547-6776

Hudson EMS
517-448-2231

[Return to Table of Contents](#)

Prenatal/Obstetrics

Page 27

Edited 5/12/20

Free Pregnancy Testing & Ultrasound

**Helping Hands Pregnancy
Resource Center**
517-437-7020

Planned Parenthood of MI
Jackson
(517) 784-1700

Center For Family Health
Jackson
(517) 748-5500

Home Visitor Programs

Parents As Teachers
Offered by Integro
517-439-2601
*Weekly home visits for pregnant moms,
or mothers of children up to 2 years of
age*

Early Head Start
Community Action Agency
Home based pre-school prep
517-437-3346

Parenting Wisely
Highfields- 517-783-4250

CPIF Resource Solutions MIHP
Carick Prevention
734-469-2322
info@cpifrs.org
www.cpifrs.org
Flexible hours Mon—Sun

Pregnancy Prevention Resource

**BHSJ Community
Health Agency**
*Prevention Education,
Contraceptives,
Contraceptive Education
STD Testing*
517-437-7395

Obstetrics

Hillsdale Hospital OB
517-437-5280
Hillsdale Obstetrics & Gynecology
(517) 437-5390

Center for Family Health
Jackson
517-748-5500

Hidden Meadows OB/GYN
Dr. Brian Sinischo
Rachel McCormack, CNM
517-437-8292

OB/GYN Henry Ford
Allegiance Health
517-205-4800

Prenatal Resources

Medicaid for Pregnant Women
www.michigan.gov/MIbridges

**Department of Health
& Human Services**
(517) 439-2200

Smoking Cessation
SEE **SUBSTANCE ABUSE RESOURCES**
PAGE #28

Obstetrics & Childbirth Education
BHSJ Community Health Agency
517-437-7395
Hillsdale Hospital Obstetrics
517-437-5280
Promedica Coldwater OB/GYN
517-279-8465
Henry Ford Women's Health Jackson
517-205-4377

Nutrition / Nutrition Education
Community Action Agency
Women, Infants, Children
Tami Gilbert, Lenawee CAA
517-263-7861

Breastfeeding Support
734-717-0401 - phone support

Breastfeeding Coalition
517-610-0279

BHSJ Community Health Agency
517-437-7395

LaLeche League
Lalecheleagueofmichigan.org

Resources for New Parents

See PARENT RESOURCES Page #23

Prenatal Loss or Postpartum Support

**Early Pregnancy Loss
Association**
miscarriagecare@gmail.com
Prenatal loss

Empty Cradle, Full Heart
Private Facebook group
Prenatal loss

**Helping Hands Pregnancy
Resource Center**
517-437-7020

Hillsdale Hospital OB Dept.
Tiny Purpose-517-437-5280

CPIF Resource Solutions MIHP
Carick Prevention
734-469-2322
info@cpifrs.org
www.cpifrs.org
Flexible hours Mon—Sun

[Return to Table](#)

If you have suggested edits, additions, or deletions to this page, please contact stefanie.rathburn@hillsdale-isd.org

**Must register on
MI Bridges prior to
receiving any
public assistance**

Public Benefits

211 Information & Referrals

Emergency Assistance

SEE ALSO:
[EMERGENCY ASSISTANCE](#) page #8

**Department of Health
& Human Services**
269-467-1200
State Emergency Relief

Community Action Agency
517-437-3346

The Salvation Army*
517-437-4240

True North (utilities)
231-355-5880

See [EMERGENCY ASSISTANCE](#)
Page #8

Legal Services

Legal Services of S. Central MI
800-688-3951
(seniors 60+)

Legal Aid of Eastern MI
800-322-4512
(up to 59 yrs. Old)

Friend of the Court
877-543-2660

**Victims Advocate
Hillsdale County Government**
517-439-1419 *Tammy James*

**Counsel & Advocacy Law Line
Legal Services of South Central MI**
888-783-8190

Food Assistance

LOCAL FOOD PANTRIES
SEE ALSO:
[FOOD PANTRIES AND MEALS](#)
Page #11

BHSJ Community Health Agency
Women, Infants and Children -WIC
517-437-7395

**Department of Health
& Human Services**
Food Assistance Program
517-439-2200

Bill Payment

**Department of Health
& Human Services**
517-439-2200
*State Emergency Relief,
Childcare Assistance*

Community Action Agency
517-437-3346
Emergency Services Contract

The Salvation Army*
517-437-4240

CARE Program
*Utility Assistance– Contact
DHHS for Enrollment*

Cash Assistance

**Department of Health
& Human Services**
517-439-2200

www.mibridges.michigan.gov

CONTACT DHHS FIRST

*Disabled Adults:
State Disability Assistance;
General Public:
Family Independence Program ***

Social Security Administration
Toll Free 800-772-1213
Supplemental Security Income***
Social Security Disability Insurance****

**Contact Wayne County Community
Action Agency and Michigan
Community Action Agency if
Assistance is unavailable from
Hillsdale CAA**
Wayne– 313-873-6000
MCA- 517-321-7500

NOTES

DHHS Benefits can be applied for online at www.mibridges.michigan.gov

*Salvation Army utility assistance must have shut off notice or a past due notice. Limited by annual cap

** For women who are pregnant, nursing, or have children. Or a male with children. Must have zero income– child support will be retained. No fee.

*** For individuals over the age of 65, blind or disabled with limited income, based on need.

****Based on how long you have worked and paid Social Security taxes, for individuals no longer able to work due to disability.

***** must be at least 180 days of wartime service and honorable discharge.

*****Salvation Army Emergency Food requires State ID for everyone over 18, and Social Security Cards for entire household

CONTACT DHHS BEFORE SEEKING ASSISTANCE ELSEWHERE

[Return to Table of Contents](#)

Senior Housing

Check for current vacancies at www.michiganhousinglocator.com

ADDITIONAL INFORMATION AND ASSISTANCE CAN BE FOUND BY CONTACTING AREA AGENCY ON AGING 888-615-8009

Subsidized and/or Independent Living

Independent Living for seniors refers to residence in a compact, easy to maintain, private apartment or house within a community of seniors.

See [HOUSING \(Apartment Listings\)](#)
Page #15

Housing Discrimination

See [HOUSING ASSISTANCE](#) Page #16

Assisted Living

Providing a unique combination of housing, personal care services, and health care, assisted living is the perfect option for people who need help with normal daily activities in a way that promotes maximum independence.

Drew's Place
Hillsdale
517-437-7902

Coldwater
517-278-9494

Country Living of Hillsdale
517-437-0239

Christ Centered Homes
517-788-9231

Skilled Nursing /Rehab/ Long-term Care Facilities

Facilities providing services ranging from short-term (often post-hospital stay) rehabilitation and skilled nursing to respite and long-term care for those individuals who can no longer safely remain in their homes due to declining physical or mental conditions.

Hillsdale County Medical Care Facility
517-439-9341 x 210

Great Lakes Caring Home Health & Hospice
Jackson and Adrian
800-379-1600

Complaints

If someone living in a nursing home has a complaint they should/can:

1. Notify the nursing home administrator immediately.
2. Call the Long Term Care Ombudsman: (866)485-9393
3. File a complaint w/ the State of MI Bureau of Health Systems: (800) 882 6006

Adult Foster Care

Adult Foster Care is defined as a home setting in the community for adults who are unable to live independently due to physical, emotional, developmental or mental health impairments.

The State of Michigan regulates licensing of these types of facilities and the status can change frequently . Please contact:

Region 2 Area Agency on Aging
(800) 335-7881

Or for a list of current AFC's visit: the Department of Licensing and Regulatory affairs Statewide Search for Adult Foster Care / Homes for the Aged Facilities page for a list of options within Hillsdale

County:

[http://www.dleg.state.mi.us/brs_afc/rs_afc.asp?](http://www.dleg.state.mi.us/brs_afc/rs_afc.asp?name=&address=&cnty_name=ST.+JOS)

[name=&address=&cnty_name=ST.+JOS](http://www.dleg.state.mi.us/brs_afc/rs_afc.asp?name=&address=&cnty_name=ST.+JOS)
[EPH&city=&zip=&type=%](http://www.dleg.state.mi.us/brs_afc/rs_afc.asp?name=&address=&cnty_name=ST.+JOS)
[25&lic_nbr=&Search=Search&sorry=yes](http://www.dleg.state.mi.us/brs_afc/rs_afc.asp?name=&address=&cnty_name=ST.+JOS)

For further assistance in finding options in your area, call:

Longterm Care Ombudsman
866-485-9393

Senior Resources

Additional Information and assistance can be found by contacting:

Region 2 Area Agency on Aging (800) 335-7881

*Information Services
Medicare/Medicaid Assistance
Nursing Facility Transition
Assistive Technology
Home and Community Services (In-Home Care)*

Perennial Park (517) 437-2422

*Homemaking Services / Home Care
Personal Care
Meals on Wheels
Respite Care
Transportation
Equipment Loan
Prescription Assistance
Legal Services
Fitness Center
Library
Socialization Events
and more...*

Legal Resources

Adult Protective Services
855-444-3911

Elder Law of Michigan
866-400-9164

Legal Hotline for MI Seniors
800-347-5297

**Legal Services of
South Central Michigan**

517-787-6111
800-676-9488

Long Term Care Ombudsman
Ahnuh Hayes
ahayes@meji.org
517-990-0510

MI Department of Civil Rights
800-482-3604

**Michigan Protection &
Advocacy Services**
800-288-5923

Alzheimer's & Dementia Caregiver Support

Area Agency on Aging
800-335-7881

Perennial Park
517-437-2422

Alzheimer's Association
800-272-3900

Kinship Care

Perennial Park Senior Center
1-800-479-3348

Home Delivered & Congregate Meals

**Perennial Park– Meals on
Wheels**
517-437-2422

SEE FOOD PANTRIES & MEALS
Page #11

Guardian/Payee/Conservator

SEE [FINANCIAL SERVICES](#) Page #10

Medicare & Medicaid

**MMAAP (MI Medicare/ Medicaid Assis-
tance Program)**

517-437-2422
800-479-3348

**MI Department of Health &
Human Services (Medicaid)**
517-439-2200

Social Security Administration (Medicare)
517-439-2200

Senior Services
MI Choice Medicaid Waiver
800-335-7881

[Return to Table of Contents](#)

Social/Recreational/Educational Opportunities

Page 31

Edited 1/24/20

If you have suggested edits, additions, or deletions to this page, please contact stefanie.rathburn@hillsdale-isd.org

Enrichment

MWSE Adult Education
(Enrichment Programs)
Hillsdale: 517-437-3381
adulthoodeducation@mwse.org

Jackson College
517-437-3343

Region 2 Area Agency on Aging
*Evidence Based Health &
Wellness Programs*
800-335-7881

MSU Extension
(Michigan State University)
517-439-9302

SEE **ADULT LITERACY** Page #3
FOR MORE OPPORTUNITIES -
LOCAL LIBRARIES MAY HAVE
SPECIAL EVENTS AND CLASSES

Parent Groups & Parenting Classes

SEE [PARENT RESOURCES](#) Page #23

Recreation (Children)

Adrian
YMCA of Lenawee County
638 W. Maumee St.
517-263-2151

Hillsdale
Hillsdale College - Swim Lessons
201 Oak St.
Hillsdale, MI
517-437-4981

Hillsdale Recreation Department
517-437-6457
97 N Broad St.
www.cityofhillsdale.org/parksrec

Michindoh Conference Center
4545 E Bacon Rd.
517-523-3616

Jackson
Dahlem Center
7117 S. Jackson Rd.
517-782-3453

Jonesville
Summer Recreation Program
517-849-2104

Reading
Kimball Camp YMCA
Berlin Drive
517-283-2168

Somerset
Somerset Beach Campgrounds
somersetbeach.org

Recreation (Seniors)

For Seniors:
PERENNIAL PARK
*Fitness Center
Wellness Programs*
320 W. Bacon Rd.
Hillsdale, MI 49242
Office: (517) 437-2422 or
(800) 479-3348

Youth/Teen Opportunities

**Youth Development and Mentoring—
Crossroads Farm**
517-283-3982

Teen Share
145 E. State St.
Coldwater, MI
517-278-5094

Faith Based
Hillsdale Assembly of God
4075 Beck Rd.
Jonesville, MI
517-849-2187
Warrior Youth (6th—12th)
Weds. 7—8 pm

Hillsdale Free Methodist
150 Union St.
517-437-2251
Kids Club (K—5th)
Wed. 6:45—8:05 pm
Youth (6th—12th)
Wed. 6:45—8:05 pm
(vans available for transportation)

Hillsdale United Brethren
Youth Group
240 S. Howell St.
Hillsdale, MI
517-437-2151

Hillsdale Upward Sports
240 S. Howell St.
Hillsdale, MI
517-437-2151

[Return to Table of Contents](#)

Special Populations

Immigration/Legal Services

Mexican Consulate of Detroit

248- 336-0320

detroit@sre.gob.mx

Passports, birth certificates

Michigan United

877-607-7774 ext 705#

Citizenship Services, Green Card

Renewals, DACA Work Permits

The Hispanic American Council (Kalamazoo) -

<http://hispanicamericancouncil.org/>

Catholic Charities

Diocese of Kalamazoo - Immigration Assistance
Program

[https://diokzoo.org/immigration-assistance-
program](https://diokzoo.org/immigration-assistance-program)

Telamon Immigration Counseling Services

<http://www.telamon.org/immigration.aspx>

Legal Aid of Southeastern Michigan

734-665-6181

Adrian Dominican Sisters

517-266-3448

South East Migrant Resource Council

Rudy Flores: FloresR2@michigan.gov

Occupational Assistance

Michigan Works! Southeast

<https://www.mwse.org/>

517-437-3381

Farm Worker Legal Services

Migrant, Immigrant,
and Seasonal Worker

800-968-4046

See [WORKFORCE DEVELOPMENT](#)

Page #42

Miscellaneous

Michigan Multi-Cultural Network

[http://www.michigan.gov/documents/mdch/
MIMulticulturalNetworkBrochure_2013-
2014_462207_7.pdf](http://www.michigan.gov/documents/mdch/MIMulticulturalNetworkBrochure_2013-2014_462207_7.pdf)

Communities of Color United to Reduce Tobacco Use/Abuse. The agencies that comprise the Network serve African Americans; American Indians; Arab Americans; Asian Americans; Chaldean Americans; Hispanics/Latinos; people who are lesbian, gay, bisexual, or transgender; and veterans.

NAACP

National Association for the Advancement of
Colored People

269-343-4105

Jackson Pride Center

517-295-3582

jacksonpridecenter@gmail.com

Telamon (Lansing)

517-323-7002

Food, shelter, taxes for farm workers

See [ADULT LITERACY](#) Page #3 for:

- English as a Second (ESL) Language Classes
- Free Tutoring to Read
- Classes in Spanish

*Provides in-person interpreters in Spanish, Hakha, Falam, Arabic, and Burmese as well as over 200 other languages through a telephone interpreting service, & document translation in almost any language. Fees apply. Training available. Call to set up account prior to use.

[Return to Table of Contents](#)

Substance Use Disorder Services

Screening & Referral

Lifeways Community Mental Health
517-439-2641

McCullough Vargas & Associates
517-849-2333

Jill Cleveland Counseling
517-225-1159

Gayle Seely
517-437-0309

Catholic Charities
517-263-2191 (Adrian)
517-782-2551 (Jackson)

Veterans

**Veteran Treatment Track
2B District Court Drug Court**
517-437-7329

Hillsdale County Veterans Services
517-437-3630

**Mid-State Health Network
Veterans Navigator Michael Scott**
517-483-2742

Medication Assisted Treatment

Hillsdale Health and Wellness
517-437-7040

Litchfield Health Clinic
517-330-3000

Center for Family Health
(Jackson)
517-748-5800

Victory Clinical Services
(Jackson)

Sober Housing

Life Challenge of MI
Hillsdale
517-437-0077

Tommy's House (women)
Coldwater
517-781-6675

Women in Transition
Angola, IN
260-624-3178

Support Groups

See [SUPPORT GROUPS](#) Pages 35-38

Treatment/Recovery

Outpatient

Jill Cleveland Counseling
517-225-1159

McCullough, Vargas & Associates
517-849-2330

Gayle Seely
517-437-0309

Segue
517-437-0117

Catholic Charities
517-263-2191 (Adrian)
517-782-2551 (Jackson)

Most outpatient treatment providers
accept Medicaid and private
insurance.

Inpatient

Hope House
517-849-2333

Life Challenge of MI
517-437-0077

Courts

2B District Court Drug Program
517-437-7329

Family Treatment Court
517-437-7758

1st Judicial Circuit Court
517-437-4321

2B District Court
517-437-4643

Probate Court
517-437-4643

Juvenile Court
517-437-4446

Circuit Court Parole/Probation
517-437-3551

Drug Courts

2B District Court Drug Court
517-437-7329

**Family Treatment Court
Probate Court**
517-437-7758

**Veteran Treatment Track
2B District Court Drug Court**

Substance Use Disorder Services

Recover Support Meetings

MONDAY

12:00 PM Hillsdale Group; 52 Ferris St. Hillsdale (C)
6:30 PM Hillsdale Group; 52 Ferris St. Hillsdale (C)
7:00 PM Smart Recovery; McCall's Center—123 E. Carleton Rd. Hillsdale (O)
7:30 PM Recovery First Group for Women (NA); Hope House 401 W. Chicago Rd. Jonesville (C)

TUESDAY

12:00 PM Hillsdale Group; 52 Ferris St. Hillsdale (C)
Recovery Warriors; 61 McCollum St. Hillsdale (O)
6:00 PM Celebrate Recovery; Hillsdale United Brethren 240 S. Howell St. Hillsdale (O)
7:30 PM Recovery First Group for Men; Hope House 401 W. Chicago Rd. Jonesville (C)
8:00 PM Hillsdale Group; 52 Ferris St. Hillsdale (C)

WEDNESDAY

12:00 PM Hillsdale Group; 52 Ferris St. Hillsdale (C)
Stepping Over the Hump (NA); 61 McCollum St. Hillsdale (O)
6:30 PM Hillsdale Group; 52 Ferris St. Hillsdale (C)
7:30 PM Recovery First Group for Women; Hope House 401 W. Chicago Rd. Jonesville (C)

THURSDAY

12:00 PM Hillsdale Group; 52 Ferris St. Hillsdale (C)
Recovery Warriors; 61 McCollum St. Hillsdale (O)
5:00 PM Smart Recovery; Heritage Lane Apartments, 117 West St. Jonesville (O)
5:30 PM Celebrate Recovery; Open Door Bible Church, 14976 Union Rd. Hudson
6:30 PM Hillsdale Group; 52 Ferris St. Hillsdale (C)
7:30 PM Recovery First Group for Women (NA); Hope House 401 W. Chicago Rd. Jonesville (C)

FRIDAY

12:00 PM Hillsdale Group; 52 Ferris St. Hillsdale (C)
7:30 PM Recovery First Group for Women (NA); Hope House 401 W. Chicago Rd. Jonesville (C)
7:30 PM Recovery First Group for Men(NA); Hope House 401 W. Chicago Rd. Jonesville (C)
8:00 PM Hillsdale Group; 52 Ferris St. Hillsdale (C)

SATURDAY

9:30 AM Hillsdale Group; 52 Ferris St. Hillsdale (W,B)
12:00 PM Hillsdale Group; 52 Ferris St. Hillsdale (C)
7:30 PM Recovery First Group for Women (NA); Hope House 401 W. Chicago Rd. Jonesville (C)
7:30 PM Recovery First Group for Men(NA); Hope House 401 W. Chicago Rd. Jonesville (C)
8:00 PM Hillsdale Group; 52 Ferris St. Hillsdale (C)

SUNDAY

10:00 AM Hillsdale Group; 52 Ferris St. Hillsdale (C)
6:30 PM New Beginnings; 69 Griswold St. Hillsdale (O)
7:30 PM Recovery First Group for Women (NA); Hope House 401 W. Chicago Rd. Jonesville (C)

Prevention/Education

PreventionWorks
(Community Coalition)
517-607-5960

Prime For Life
(District Court, Schools)
517-607-5960

Moral Reconation Therapy (MRT)
517-437-7329

Hillsdale Co. Sherriff Office - METH WATCH
517-437-7317

Smoking Cessation
BHSJ Community Health Agency
517-437-7395

Michigan Tobacco Quit Line
1-800-QUIT - NOW

Prescription Take Back Boxes

Over-the-counter and prescription meds only:

Hillsdale City Policy Department
Jonesville Police Department
Hillsdale Co. Sheriff Office

Sharps (needles, etc)
Hillsdale Hospital Lab

MEETING CODES

(O) Open to anyone
(W) Women
(B) Big Book Study
(C) Closed, persons with substance dependence only
(NA) Narcotics Anonymous

[Return to Table of Contents](#)

Support Groups

Addiction

See [Substance Use Disorder Services](#)
Page #34

Health

Hillsdale County Suicide Prevention Coalition- Depression Support Group

2nd Thursday each month, 4 PM
House of Refuge Church
123 E. Carleton St. Hillsdale, MI 49242
517-437-1138

Helping Hands Pregnancy Resource Center Prenatal Support Group

46 S. Howell Street
517-437-7020

Depression & Bipolar Support Alliance

Calvary United Methodist Church
925 Backus St.
Jackson MI 49202
jaxdbsa@gmail.com
2nd & 4th Wednesday 6:30 pm

Henry Ford Allegiance Health Depression Support Group

517-789-5971
Monday 6—7:30 p.m.

Little Village Nursing Circle

517-617-5585
11 E Bacon St.; Hillsdale
1st and 3rd Friday 10 a.m.
4th Monday 5:30 p.m.

Parkinson's Support Group by Perennial Park

Meets the 2nd Thursday of each month

Bereavement

Another Day Another Memory (ADAM) Grief Support Group

517-782-2551
Support for all ages (4 and up)
Wed. potluck 6:15 pm
Group 6:45 pm

Camp Courage Hospice of Hillsdale County

517-437-5252
A one-day grief camp for children ages 6-14 who have lost a loved one. Held every year in June the Saturday after Father's Day at Kimball Camp in Reading.

Family Impact Centers Grief Support Group

735 N. Grand Avenue
Fowlerville, MI 48836
517-223-4428

Heart O' The Lakes Church

7031 Jefferson Rd.
Brooklyn MI 49230
517-592-8623
Thurs. 1:00 p.m.
(12-week cycle)

Hospice of Hillsdale County

124 S. Howell St. Hillsdale, MI 49242
(517) 437-5252
Grief Support; Group and individual counseling for adults and children

New Beginnings by Perennial Park

Meets every Friday at 12:00
For those who have recently lost a spouse
320 W. Bacon Rd.,
Hillsdale, MI 49242
(517) 437-2422

Living with Grief

This group is for adults who have experienced any type of loss. This adult support group is ongoing and welcomes new members at any time throughout the year.

Monday from 1:00 PM - 2:30 PM
One Jackson Square
Henry Ford Allegiance Hospice
100 E. Michigan Ave (4th Floor)
Jackson, MI 492011

Facebook

[Empty Cradle, Full heart](#)
Private Facebook group

[Heartache and Hope: Life after Losing a Child](#)

Public Facebook Community

Grieving Mothers

Private Facebook Group

Domestic & Sexual Abuse

A Right to Innocence at Karen's House

A Self-Help PEER Support Group for WOMEN who experienced incest or other sexual abuse as children or teens.
1st Wednesday of every month
from 6-8 PM
Osseo, Michigan
(517) 523-3526

Domestic Harmony Group Counseling

For location,
call (517) 439-1454 or 1-888-439-1454
Tuesday: 7:00 PM - 8:30 PM
Thursday: 7:00 PM - 8:30 PM

Aware Shelter Support Groups

706 W. Michigan Ave.
Jackson, MI 49201

Sexual Assault Group

Free Group support for those who have experienced sexual assault.
Please call Valerie at 517-783-1638
Ext. 133 to Sign up.

Domestic Assault Group

Free group support for those who have experienced domestic violence. Please contact the Aware Shelter for more information 517-783-2861

Aware Kids's Club

Free & Confidential Support for any child 6-12 whose parents have experienced domestic violence.
Please call Karis at 517-783-1638
Ext. 143 for dates and times.

Support Groups

Life Issues (Faith Based)

Crossroads Farms Barnyard (6-12th Grade)

*Faith Based Discussion and
Counseling Youth Group*

5520 Card Rd
Reading, MI 49274
517-283-3982

Dementia Related

Alzheimer's Support Group by Perennial Park

*Meets the 4th Wednesday of
each month at 3:30
320 W. Bacon Rd.,*

Marriage

Building Better Marriages

Weekly Workshops
Adrian, Hillsdale & Jackson
MarriageMattersJackson.com
517-796-5116

Parenting

SEE PARENT RESOURCES

Page #22

Family Impact Centers Single Mother Support Group

735 N. Grand Avenue
Fowlerville, MI 48836
517-223-4428

Kinship Care by Perennial Park Senior Center

320 W. Bacon Rd.,
Hillsdale, MI 49242
1-800-479-3348

Family Service and Children's Aid Parent Education Class

Please contact Corey to schedule intake
and 8-week course
517-787-7920 ext 515
Tuesday 10:00 AM - 12:00 PM
Thursday 6:00 PM - 8:00 PM

Divorced or Separated

SMILE

Educational program for divorced
parents with children under the age of
eighteen.

Contact:

Jackson County Friend of the Court
Office 517-788-4470
3rd Tuesday of the Month
Times Change
Call to confirm.

Forget Me Not

Educational program for separated par-
ents with children under the age of
eighteen.

Contact:

Jackson County Friend of the Court
Office 517-788-4470
1st Tuesday of the Month
Times Change
Call to confirm.

Thrift Stores

Reading

June's Place

125 S Main St.

Reading, MI

517-283-1888

Thurs.—Sat. 9 am—5 pm

Hillsdale

Hillsdale Community Thrift

390 W. Carleton

Hillsdale, MI

517-513-1729

Mon.—Sat. 9 am - 6 pm

Sun. 12—5 pm

Hot Deals

1283 Hudson Rd.

Hillsdale, MI

517-610-5527

Tues.—Fri. 10 am—5 pm

Sat. 10 am—3 pm

Salvation Army Family Store

2940 W Carleton

Hillsdale MI

Mon.—Sat. 10 am—7 pm

Outside of Hillsdale County

Open Door Free Store

111 N. Main St.

Concord, MI

517-524-6157

Mon., Thurs. 3—6 pm

Sat. 10 am—1 pm

Associated Charities

221 S. Tecumseh St.

Adrian, MI

517-265-7255

Tues., Thurs. 9 am—3 pm

Wed. 12—6 pm

Fri. 9 am—12 pm

Goodwill

1400 US-223

Adrian, MI

517-759-3600

Mon.—Sat. 9 am—6 pm

Sun. 10 am—7 pm

398 N Willowbrook Rd.

Coldwater, MI

517-278-3818

Mon.—Sat 9:30 am—8 pm

Sun. 11 am—6 pm

955 W. Argyle St.

Jackson, MI

517-789-6193

Mon.—Sat. 9:30 am—8 pm

Sun. 11 am—6 pm

Resale Depot

2390 Wildwood Ave.

Jackson, MI

517-780-9099

Mon.—Fri. 10 am—6 pm

Sat. 10 am—5 pm

Plato's Closet

1190 N West Ave

Jackson, MI

517-998-6622

Mon.—Sat. 10 am—9 pm

Sun. 11 am—6 pm

Clothing Carousel

717 W. Franklin St.

Jackson, MI

517-782-7346

Mon.—Fri. 10 am—6 pm

Sat. 10 am—4 pm

St. Vincent De Paul Store

1501 E Michigan Ave.

Jackson, MI

517-784-8377

Mon.—Fri. 9 am—7 pm

Sat. 9 am—3 pm

**IF AN EMERGENCY
CALL 9-1-1**

Transportation & Gas Vouchers

Page 38

Edited 7/24/19

Medical Non-Emergency

Seniors (60+) & Disabled Adults

Medicare patients
call number on back
of your card.

DHHS
(517) 439-2200

**Perennial Park
Transportation Services**
(517) 437-2422
*(within county, must be over 60 or
disabled)*

Veterans

**Hillsdale Veterans
Services**
(517) 437-3630
*Hillsdale Veterans services
will provide transportation
to services.
Call for information*

Children's Special Healthcare

If child has Medicaid,
Call your DHHS
(517) 439-2200

**If child does not
have Medicaid,**
Call 517-437-3385

Patients with Medicaid

Call the
number on the
back of your
Medicaid card.

For further information,
Call **DHHS**
(517) 439-2200
www.michigan.gov/mdhhs

Medical Equipment

Dial-A-Ride
(517) 437-3385

Key Opportunities
517-437-3385

Non Medical Transportation

Dial-A-Ride Transportation- (517) 437-3385

Dial-a-Ride operates transportation services within the City limits from 7:15 a.m. until 4:15 p.m. Monday through Friday. Dial-a-Ride is closed between 11:30 a.m. and 12:30 p.m. each day for lunch.

- Adult (Ages 12 to 59) - \$3.00
- Children (Ages 3 to 11) - \$1.50
- Toddlers/Infants (Ages 2 and under) - Free when accompanied by an adult
- Handicapped & Seniors (Ages 60+) - \$1.50

Gas Vouchers

Some local agencies may have
funding available to provide
gasoline to residents. Contact
Community Action Agency or
Salvation Army for more info.

**THIS FUNDING IS ALWAYS
EXTREMELY LIMITED**

[Return to Table of Contents](#)

Veterans Benefits

Page 39

Edited 1/24/20

**Hillsdale County
Veteran Services
(517) 437-3630**

**Jackson Community VA
Medical Center
517-764-3609**

**Michigan Veterans Affairs Agency
Veterans Resource Center
800.MICHVET**

**Download VA Welcome
Kit**

Referrals To:

Transitional Housing
Food Pantry
Life Skills Training
Job Opportunities/Referrals
Education
Health Care Services
PTSD Counseling
Transportation Assistance
Meals & Clothing
Support Groups
Substance Abuse Intervention
Legal Assistance
Ramps

Emergency Housing

Hillsdale County Veteran Services
(517) 437-3630
Supportive Service For
Veterans & Families (SSVF)
Community Action Agency
Veteran Housing Advocate
800-750-9300
Homeless Veteran Crisis Line
1-877-424-3838
Community Action Agency
517-437-3346 (Hillsdale)
517-784-4800 (Jackson)

Burial Services

Advanced Burial Planning
*Veterans eligible for burial services
can fax or mail their DD2145.*
www.cem.va.gov
DHHS
(517)439-2200
Hillsdale County Veteran Services
(517) 437-3630
Fort Custer National Cemetery
269-731-4164

Education & Training

Michigan Veterans Affairs Agency
800.MICHVET
MichiganVeterans.com
Department of Veteran Affairs
Education
888-442-4551
Michigan Works! Southeast
Employment
517-437-3381
MI Veterans Employment Services
www.mitalent.org/veteran

Healthcare

St. Peters Free Clinic
517-437-8911
CHAMPVA
(VA Civilian Health & Medical Program)
800- 733-8387
Jackson Community VA
517-764-3609
National Veterans Administration
877-222-8387

Mental Health

Jackson Community VA
517-764-3609
877- WAR- VETS
(877-927-8387)
Online Mental Health Screening Tool:
screening.mentalhealthscreening.org/MVAA
Veterans Access, VA Choice Program
866-606-8198
Comfort Dog Ministry
St. Peter's Lutheran Church
Three Rivers, MI
269-278-8415

Life Insurance

Veteran Group Life Insurance
Benefits.VA.GOV/Insurance/VGLI
National Veterans Administration
800-669-8477

Compensation & Pension

Hillsdale County Veteran Services
(517) 437-3630

Substance Abuse

Lifeways Community Mental Health
517-439-2641

Crisis Line

Veterans Crisis Line
800-273-8255

Utilities/Rent Assistance

Supportive Services for Veteran Families
800-750-9300
Michigan Bikers Helping Veterans
www.supportmiveterans.org/veteran-

[Return to Table of Contents](#)

If you have suggested edits, additions, or deletions to this page, please contact stefanie.rathburn@hillsdale-isd.org

Volunteerism

THIS IS NOT AN EXHAUSTIVE LIST– MANY ORGANIZATIONS ACCEPT VOLUNTEERS AS NEEDED

Department of Health & Human Services

Drivers

517-439-2200

Court Appointed Special Advocate

Advocates for Abused or Neglected Children

517-425-4145

Foster Parents

Contact DHHS

517-439-2200

Domestic Harmony

Women's Shelter

517-439-1454

Community Action Agency Preschool

517-784-4800

Girl Scouts

Contact Girl Scouts of Jackson

517-784-8543

Boy Scouts

Contact First United Methodist Church

517-437-3681

Perennial Park

517-437-2422

Habitat For Humanity

517-437-3370

MSU Extension

4-H Project Leaders & Ag-citing Presenters

517-439-9301

Great Start Collaborative

517-689-1815

Greater Hillsdale Humane Society

517-523-2308

Drew's Place Senior Center

517-437-7902

Salvation Army

517-437-4240

SPARC

Special needs education center

517-437-2762

Hospice of Hillsdale County

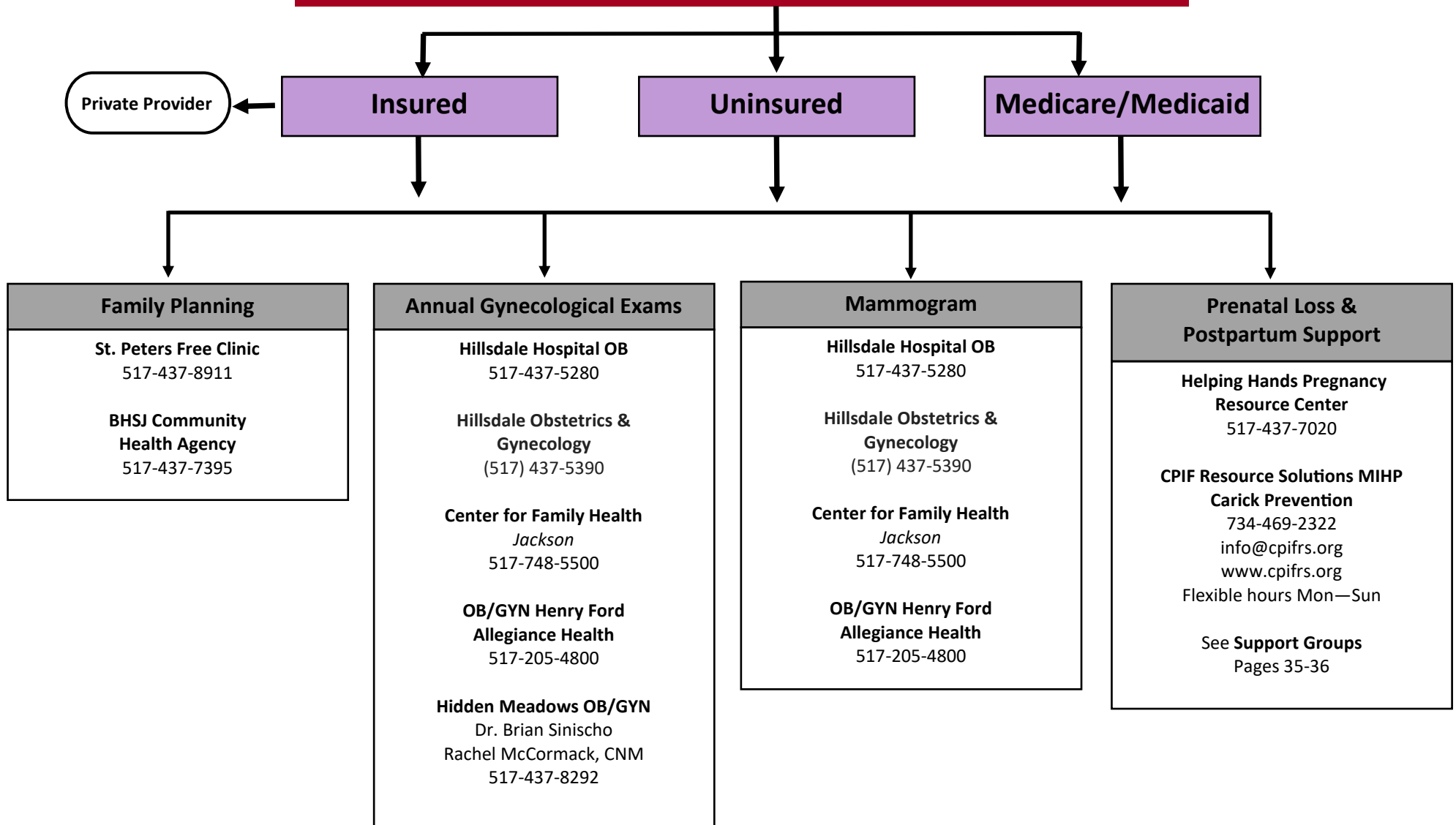
517-437-5252

Most Churches in Hillsdale offer some kind of volunteering opportunity, regardless of religions affiliation. Contact your local religious leader to inquire

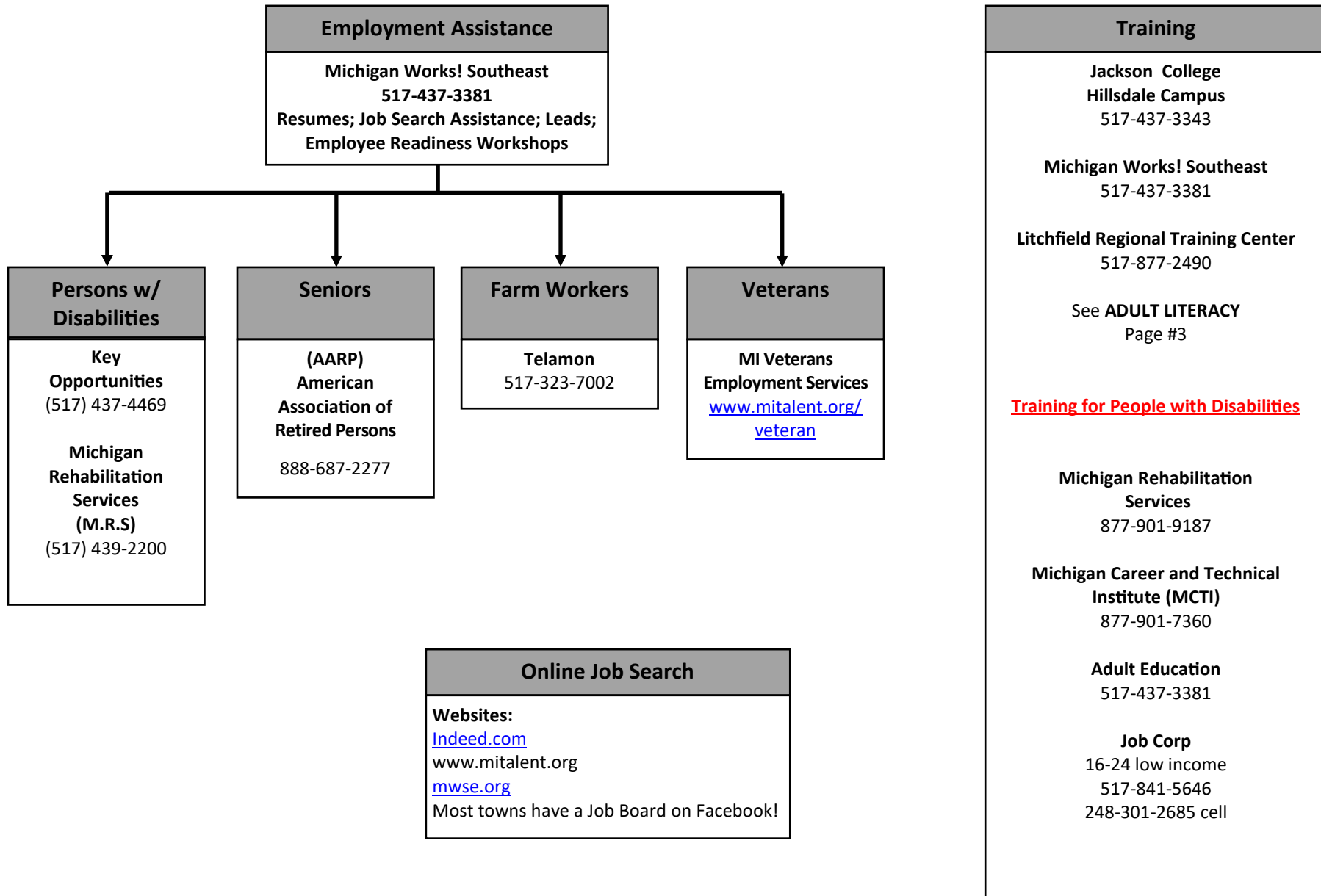
Many Pubic Schools Accept Parent Volunteers. Contact your child's school for more information

[Return to Table of Contents](#)

Women's Health



Workforce Development Employment & Training



School / Education (Local School Districts)

Camden Frontier Schools

Camden Frontier Middle/High School
4971 Montgomery Road Camden, MI 49232
517-368-5255

Camden Elementary

4951 Montgomery Rd Camden, MI 49232
517-368-5258

Hillsdale Community Schools

Administrative Building

30. S. Norwood St., Hillsdale, MI 49242
517-437-4401

Hillsdale High School

30. S. Norwood St., Hillsdale, MI 49242
517-439-4320

Davis Middle School

30 N. West St., Hillsdale, MI 49242
517-439-4326

Gier Elementary School

175 Spring St., Hillsdale, MI 49242
517-437-7347

Bailey Early Childhood Center

59 S. Hillsdale St., Hillsdale, MI 49242
517-437-7369

Hillsdale County Intermediate School District

Administrative Office

310 W. Bacon Street , Hillsdale, MI 49242
517-437-0990

Hillsdale Preparatory School

160 W. Mechanic, Hillsdale, MI 49242
517-437-7990

Jonesville Community Schools

Jonesville High School

460 Adrian Rd. Jonesville, MI 49250
517-849-9934

Jonesville Middle School

401 E Chicago St. Jonesville, MI 49250
517-849-3210

Williams Elementary

440 Adrian Rd. Jonesville, MI 49250
517-849-9175

Litchfield Community Schools

Litchfield Middle/High School

210 Williams Litchfield, MI 49252
517-542-2386

Litchfield Elementary

213 N. Chicago St. Litchfield, MI 49252
517-542-2356

North Adams-Jerome Public Schools

North Adams-Jerome High

4555 Knowles Rd. North Adams, MI 49262
517-287-4214

North Adams-Jerome Elementary

4555 Knowles Rd. North Adams, MI 49262
517-287-4278

Pittsford Area Schools

Pittsford Elementary/Middle/High Schools

9304 Hamilton Pittsford, MI 49271
517-523-3481

Reading Community Schools

Reading High/Middle School

301 Chestnut Reading, MI 49274
517-283-2142

Reading Elementary

Strong Ave Reading, MI 49274
517-283-2188

Waldron Area Schools

13380 Waldron Rd. Waldron, MI 49288
517-286-6251

Will Carleton Academy

2001 Hallett Rd, Hillsdale, MI 49242
517-437-2000

Support for Youth

Do'chas II: Services for Youth

517-788-4605
1200 N West Avenue Suite 806, Jackson

Free services for youth, 13-19 years old:
crisis intervention, school and home visits,
case management, youth advocacy, skill-
building, referrals and support services

Support for Homeless Students (county-wide)

McKinney-Vento

517-278-7233
mvcoordinator@yahoo.com

PARENTING SUPPORT:

[5 Tips: Keep Calm & Manage Stress](#)

[Helping Young Children Through COVID-19](#)

[Supporting Young Children Isolated Due to COVID-19](#)

[Helping Children Recover from the Emotional Toll of COVID](#)

[Ways to Promote Children's Resilience to the COVID-19 Pandemic](#)

[Fathering in Challenging Times](#)

[Great Start Parent Coalition Meetings](#)

For additional support, visit [PARENT RESOURCES](#), p. 22

FOR CHILDREN:

[Joey the Kangaroo Coloring Book](#)

[Hello My Name is Coronavirus](#)

[My COVID-19 Time Capsule Workbook](#)

[County-wide Playgroup Opportunities](#)

PREGNANCY/NEWBORN/BREASTFEEDING RESOURCES:

[Pregnancy & COVID-19](#)

[Caring For Your New Baby](#)

[Breastfeeding During COVID-19](#)

[Return to Table of Con-](#)

SUBSTANCE USE:

[Virtual Recovery Resources](#)

For additional support, visit [SUBSTANCE USE DISORDER SERVICES](#), P. 33-34

UNEMPLOYMENT SUPPORT:

[Unemployment Insurance Agency](#)

HOUSING:

[Eviction Diversion Program](#)

STAYING WELL:

[Local COVID Testing Sites](#)

[Managing Fears and Anxiety around the Coronavirus \(COVID-19\)](#)

[MDHHS Sources of Support](#)

Domestic Harmony; 1-888-439-1454

For additional support, visit [MENTAL HEALTH SUPPORTS](#), P.17-20

[Return to Table of Contents](#)

FOOD:

[Hillsdale County Food Resource Guide](#)

To learn what your local school district is offering, please contact them directly.

Phone numbers can be found at: [YOUTH SERVICES](#) , P. 43

UNMET NEEDS:

[Central Michigan 2-1-1](#)

Phone: 2-1-1 or 866.561.2500

Text: Text your zip code to 898-211

TDD: 517.789.2492

Fax: 517-789-1271

Email: 211@lifewayscmh.org

[Community Action Agency](#)

(517) 437-3346

[Department of Health & Human Services](#)

(517) 439-2200

[MI Bridges](#)

This image shows a blank sheet of white paper with horizontal ruling lines. The lines are evenly spaced and run across the width of the page. There are no margins, text, or other markings on the paper.